



## Transport Geography Papers of Polish Geographical Society

2021, 24(2), 40-68

DOI 10.4467/2543859XPKG.21.010.14953

**Received:** 30.04.2021

**Received in revised form:** 12.06.2021

**Accepted:** 15.06.2021

**Published:** 30.06.2021

---

## RAILWAY ATLASES: BIBLIOGRAPHY OF THE CARTOGRAPHIC PRODUCTS PUBLISHED WORLDWIDE BETWEEN 1945 AND 2021

*Atlasy kolejowe: bibliografia produktów kartograficznych opublikowanych na świecie w latach 1945–2021*

**Karol Kowalczyk**

Institute of Socio-Economic Geography and Spatial Management, Maria Curie-Skłodowska University, al. Kraśnicka 2D, 20-718 Lublin

e-mail: karol.kowalczyk@mail.umcs.pl



<https://orcid.org/0000-0001-6426-963X>

### Citation:

Kowalczyk K., 2021, Railway atlases: bibliography of the cartographic products published worldwide between 1945 and 2021, *Transport Geography Papers of PGS*, 24(2), 40-68.

**Abstract:** The objective of this paper is to present the results of a study compiling a bibliography of railway atlases published worldwide between 1945 and 2021. The atlases are a specific kind of product that supports cartographic communication of information regarding the current or former state of the railway network in a certain area. They are used in professional activities, for travel planning, or as a historical source. The research identified 253 unique titles forming 348 separate volumes. The bibliographic data are presented in tables corresponding to particular geographic regions. The lists are preceded by a descriptive part devoted to the origins of railway cartography, research methods, and a brief overview of selected items.

**Keywords:** railway maps, geographic atlases, rail transport, cartographic products after 1945

---

## 1. Introduction: the origins of railway cartography

For centuries, maps have served as a tool facilitating human mobility in geographic space. Even ancient cartographers mapped transport routes for the postal services of the time. The advent of railways in the first half of the 19<sup>th</sup> century, and their global diffusion out of Great Britain, resulted in the appearance of graphic representations of the new mode of transport on maps. This required defining appropriate methods of presentation (Brunner, Günzel, 1988). The railway thereby joined the group of standard features appearing on general geographic maps. It also became the subject of thematic elaborations within socio-economic cartography (Żyszkowska et al., 2012; Ovenden, 2015a).

Early railway maps were drawn to determine the course of forthcoming lines, as a product of land surveying (Musich, 2006; Challis, Rush, 2009; Kot, 2014). Such documents were for instance required by the British Parliament before it would give its consent to a new investment. One of the oldest maps dates from 1822 (Fig. 1 A). It shows variants for the alignment of the world's first public steam-powered railway – the Stockton and Darlington Railway, opened in 1825 in North East England. The map was based on the survey by G. Overton, redesigned according to the recommendations of George Stephenson, known as

‘the father of the railways’, also famous for building steam locomotives (Holland, Spaven, 2013). Maps from this period were not limited to the presentation of qualitative features. In 1837, H. D. Harness proposed a flow map for the first time in history. He presented a weekly number of passengers travelling by public transport, and quantity of freight traffic, on roads and canals, against the planned railway network (Fig. 1 B). The maps were appended to the “Second Report of the Commissioners Appointed to Consider and Recommend a General System of Railways for Ireland” (*Atlas to accompany...*, 1838).

Subsequent cartographic elaborations were applied in the regular activities of railway companies such as development and maintenance of infrastructure, management of train traffic, organisation of services, or calculation of fares. These maps often remained exclusively in official use. However, the products with a public status were also available (Challis, Rush, 2009). Train travellers had an opportunity to use maps attached to the pocket timetables issued by individual companies or as collective editions. The world's first national rail system map – “Map & Sections of the Railways of Great Britain” was published by G. Bradshaw in 1839, along with the country-wide timetable. His name became a brand under which railway guide books were regularly revised over the following years until 1961. Maps for general use were even exploited

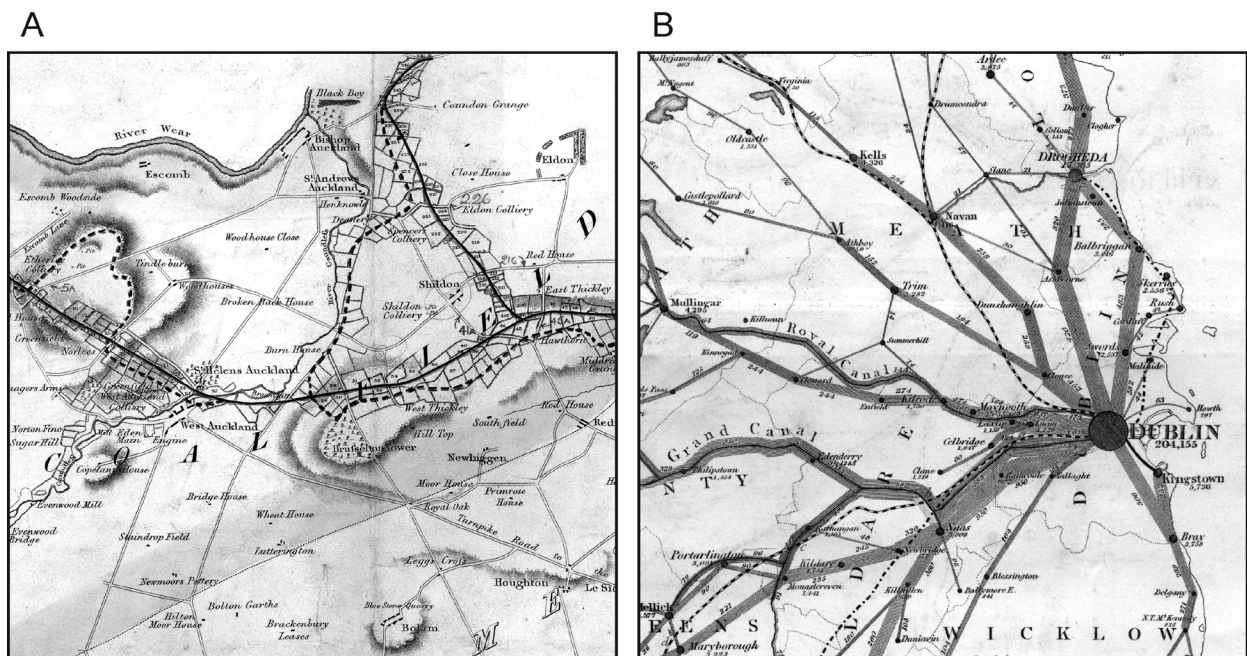


Fig. 1. Extracts from early railway maps: A – “Plan and Section of the intended Railway or Tramroad from Stockton by Darlington to the Collieries near West Auckland in the County of Durham” of 1822; B – “Map of Ireland to accompany the Report of the Railway Commissioners, showing the relative Number of Passengers in Different Directions by regular Public Conveyances” of 1837 (reproductions not to scale).

Source: Network Rail Media Centre, 2018 (A) (Public Domain); *Atlas to accompany...*, 1838 (B) (University College Dublin Digital Library, CC BY-NC-SA 4.0).



to advertise railway services by forming an integral part of designs of various leaflets and posters (Holland, Spaven, 2013; Ovenden, 2015a).

The strategic and military significance of railways sometimes served as an excuse to keep many maps confidential. In the 20<sup>th</sup> century, this was particularly evident in countries of the so-called Eastern Bloc (the USSR and its satellite states), where access to cartographic documentation was strictly controlled. Even worse, some outdated materials were intentionally and irrecoverably destroyed. Therefore, the collections of today's archives that provide researchers with access to old documents, disclosed after the political transitions of the 1990's, are incomplete (Tucholski, 2013).

The distribution of cartographic products to passengers in the Eastern Bloc lagged behind that in the western countries. Under the communist regime, maps for common use were deliberately over-generalised and deformed in cartometric terms. This was a manifestation of the totalitarian attitude to state security. The uselessness of maps for potential enemies meant severe reduction of their information function for citizens (Konopska, 2013). The Soviet diagrammatic railway atlases, publicly accessible only since 1960's, are an example of this phenomenon (Fig. 2 B). On the other hand, the application of simplified maps, not affected by censorship rules, proved to be a con-

venient solution for users of public transportation in urban agglomerations. The ordinary passenger could thereby easily find suitable connections without having to follow accurately mapped networks. The style of a transit map, which is still the world standard, originates from the designs of G. Dow and H. Beck (Holland, Spaven, 2013; Field, Cartwright, 2014; Ovenden, 2015b). The latter was the author of the widely recognised diagram introduced in 1933 at the London Underground (Fig. 2 A).

The dynamic development of railway networks, becoming increasingly complex, triggered the necessity to create cartographic products with more detailed information, dedicated to advanced users. This was aided by technological progress in printing in the mid-19<sup>th</sup> century (Żyszkowska et al., 2012). The intended effect was achieved by increasing the scale and implementing colourful elements. As a result, the map could be produced in one of two basic forms: a large-format sheet or an atlas. The latter one usually offered more efficient cartographic communication (Horodyski, 1979). Most railway atlases would be composed of a set of maps representing different parts of the same area, printed on smaller sheets and joined together by a binding or placed in a case. Due to their portable format, they made maps easier to read while working in an office, on location, or while

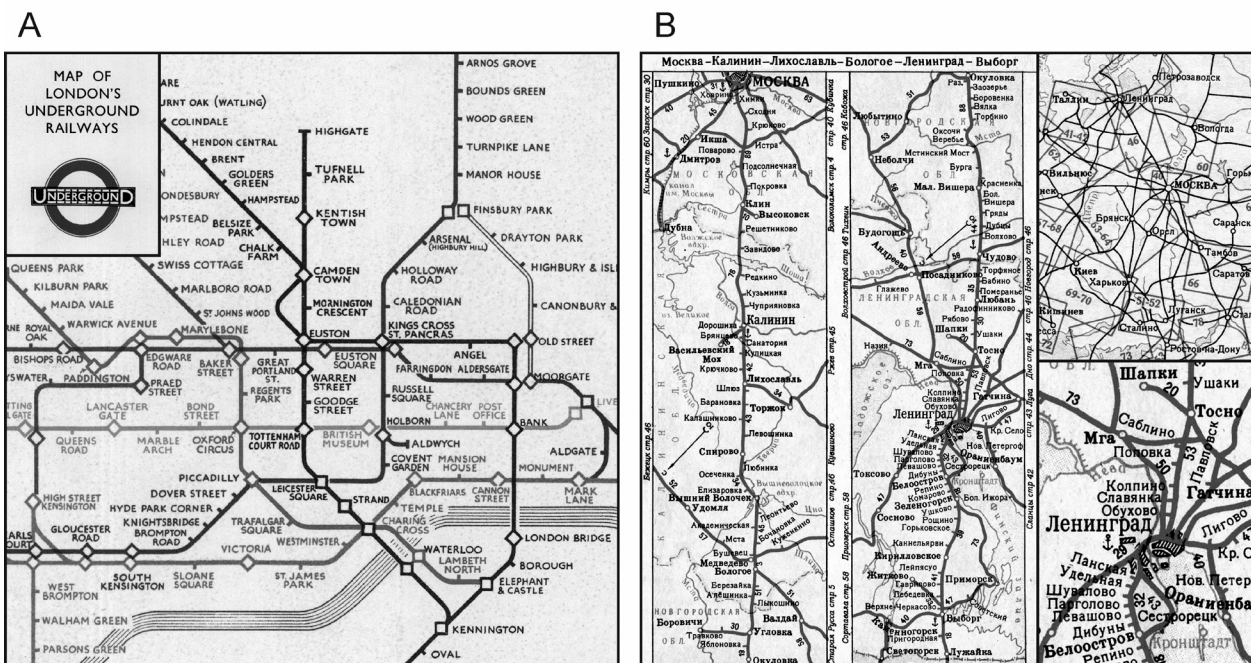


Fig. 2. Two sides of railway map simplification: A – an extract from the “Map of London’s Underground Railways” of 1933 by Henry (Harry) Beck; B – maps from the Soviet railway atlas of 1960: a course of the 780-kilometre line Moscow – Leningrad (Saint Petersburg) – Vyborg rotated at different angles and placed in two narrow frames (left), a magnified area of Leningrad junction (bottom right); an extract from an inaccurate and chaotic key to map pages (top right) (reproductions not to scale).

Source: Beck, 1933 (A) (David Rumsey Map Collection, David Rumsey Map Center, Stanford Libraries, CC BY-NC-SA 3.0); Baudina (ed.), 1960 (B).

travelling. An example of a product dating back to the early phase of railway development in continental Europe is “Eisenbahn-Atlas von Deutschland, Belgien und dem Elsass” (Hendschel, 1844), intended for travellers. In addition to maps, it contains timetables, fares, and operating regulations. Another interesting item, published periodically at the turn of the 20<sup>th</sup> century, is “Cram’s Standard American Railway System Atlas of the World” (i.a. *Cram’s...*, 1901). It presents the United States in detail, and other parts of the world in overview. Today both atlases are available in digital versions. This definitely expands the group of potential readers while protecting the physical copies from overuse. Unfortunately, not all vintage railway maps have been archived in such a way. It can be expected, however, that more and more titles will be digitalised or reprinted in the future.

## 2. Study objectives, source materials, and research methods

The objective of this paper is to present the results of a study that compiled a bibliography of railway atlases published worldwide between 1945 and 2021, i.e. from the end of World War II and forging of the post-war international order to the beginning of the third decade of the 21<sup>st</sup> century. Admittedly, the period covers less than 40% of the time elapsed since the early days of railways. Nevertheless, it represents an era of dynamic technological development and significant modal shifts. Steam traction had been gradually withdrawn and railways have declined in favour of road transport, and then air transport (as regards long-distance journeys). This has occurred in western countries first, already since the 1950’s, with the United States being a glaring example (Stover, 1999). In the former Eastern Bloc, similar processes have intensified by the end of the century. The contraction of railway networks has additionally contributed to the problem of transport and social exclusion (Taylor, 2006). But the signs of a revival have also emerged. Starting from Japan of the 1960’s, high-speed lines have been built. Nowadays they exist in twenty countries (UIC, 2021). Some conventional lines have been modernised, for instance in Central and Eastern Europe as a result of the allocation of the EU funds (Rosik, Kowalczyk, 2015). Over the last two decades, commuter railways within metropolitan areas have expanded (UITP, 2018), and land intermodal services between East Asia and Western Europe have developed (Jakubowski et al., 2020).

These issues are of interest to a broad circle of researchers: geographers (e.g. Taylor, 2007; Wang et al., 2009; Martí-Henneberg, 2013), historians (e.g. Dominas, Przerwa, 2017; Stanev et al., 2017), economists

(e.g. Koźlak, 2013; Button, 2017), civil engineers (e.g. de Azevedo Isidoro et al., 2017; Chai et al., 2019), as well as journalists (e.g. Wolmar, 2007), and a large group of enthusiasts (e.g. Szczuryk vel Szczerba, 2017). Map products undoubtedly constitute a very useful source of information in scientific and hobbyist activities. Cartographic bibliographies, however, make it much easier to find relevant items.

Although transport maps appear to be more widely represented by road maps, the global output of railway cartography is actually impossible to measure. National bibliographies of cartographic sources illustrating the history of railway transport in particular areas are still scarce. This is a serious obstacle to conducting research. The problem also concerns Poland (Tucholski, 2013). The records of British, American, or Austrian cartographic products are positive exceptions. For example, since 1985, The Railway and Canal Historical Society has published the annual “Bibliography of the History of Inland Waterways, Railways & Road Transport in the British Isles”. It enlists atlases and gazetteers. A publication entitled “Railroad Maps of the United States: A Selective Annotated Bibliography of Original 19th-century Maps in the Geography and Map Division of the Library of Congress” (Modelski, 1975) deserves attention. It contains a list of the 620 most crucial items. Another volume called “Records Relating to Railroads in the Cartographic Section of the National Archives” (Brauer, 2010) was published in a series of guides to American archive collections. Maps and atlases are also included in a monumental 3-volume bibliography of Austrian railway literature for the period up to 1918 (Neuner, 2002).

There are several bibliographies available online, e.g. for Swiss and German railways (*Bibliographie: CH...; Bibliographie: DB...; Dumjahn’s...*). An additional category that can be considered as an intermediate solution are digital libraries and repositories that store among others raster reproductions of railway maps, along with metadata. The “David Rumsey Historical Map Collection” web portal is particularly interesting. It offers a range of tools facilitating browsing this extensive resource of cartographic material. Raster maps for the area of Central and Eastern Europe are hosted on Polish portals “Mapster”, “Ogólnopolska Baza Kolejowa”, and “Atlas Kolejowy Polski, Czech, Słowacji i Podkarpackiej Rusi”.

Due to the vast diversity of maps, their dispersion in archives or private collections, and losses caused by random events, acts of war, or intentional destruction, the compilation of a reasonably complete bibliography of railway maps is a very difficult and time-consuming task, even when targeting on a single country. It does not mean, however, that any scientific effort to fill this knowledge gap will be equally problematic. Focusing



on a specific kind of cartographic product and setting a time frame seem to be the adequate approach.

Taking all these conditions into account, the scope of the compiled bibliography was limited to the years 1945-2021, and included only atlases. In the entire body of railway cartographic products, they belong to a relatively quantifiable category. Most of the items published in the 20<sup>th</sup> and 21<sup>st</sup> centuries remain in bookstore or antiquarian circulation, and can be found in libraries. On the other hand, some of the 19<sup>th</sup> century titles are now more difficult to access. Their existence may not even be recorded.

Following Horodyski's (1979) classification, railway atlases are monothematic elaborations in structural terms. Regarding the content, they are classified as specialised, and belong to the socio-economic group, as opposed to general and physical geographic atlases. The scientific literature very occasionally deals with the topic of railway atlases. Reviews of single items are usually encountered (e.g. Whyte, 2005; Kennedy, 2006). They rarely compare various elaborations (Okonek, 2010). The atlases tend to appear in the background of studies concerning the more extensive topic of railway maps (e.g. Musich, 2006; Challis, Rush, 2009; Holland, Spaven, 2013; Segal, 2016; Peukert, 2019). Reports on products for official use have been published in the industrial press (e.g. Ulka, 1982; *Nueva versión del Atlas...*, 2010). There have been no overview studies so far devoted exclusively to railway atlases, and including their bibliography.

The choice of this specific kind of cartographic product as a research object was further influenced by the author's experience of more than a decade of development of his own collection of railway atlases. A contribution to the bibliography was also made by a speech entitled "The atlas methods of presentation of railway infrastructure from selected countries of the world", delivered by the author in 2016 during the 39<sup>th</sup> Polish Cartographic Conference (Kowalczyk, Adamiak, 2016).

It should be emphasised that not all publications in the field of railway transport bearing the word "atlas" in the title are real atlases. This label is sometimes attached to photograph albums or rolling stock catalogues. The selection of sources was guided by scientific definitions of the geographical atlas. According to Ratajski (1989), an atlas is a systematic collection of maps with appropriately selected contents and layout, making up a methodically and conceptually complete body. It is characterised by uniformity, meaning full presentation of all issues arising from the subject and purpose of the atlas, and internal unity, meaning logical sequence of complementary maps and uniform cartographic style. In the opinion of Salishchev (2003), an atlas is not simply a collection of various geographical maps, and is not a mechanical combination of them,

but it is a system of complementary and organically interrelated maps.

The primary method of compiling the bibliography was an inventory of the author's own collection. Some of the items are stored in the form of physical copies, while others are archived on hard drives as electronic files (.pdf or .djvu). This method accounted for completing approximately 40% of the final bibliography. The second method was Internet query, primarily involving the "WorldCat" portal. It integrates catalogues of libraries from all over the world. Verifying the content of the directly inaccessible atlases was based on a search of auction and antiquarian portals ("AbeBooks", "Booklooker", "eBay", "ZVAB"). Their users sometimes attach photographs of selected pages from the inside of books. Websites of selected online bookshops were also visited. Moreover, three Polish libraries were searched for atlases and scientific literature on railway cartography.

The research resulted in identifying 253 titles forming 348 separate volumes considered as atlases. Based on the definitions cited above (Ratajski, 1989; Salishchev, 2003), elaborations showing properties of a typical atlas were primarily considered (a common legend with explanation of symbols; a main map divided into a set of pages with a key to them; complex network segments shown on larger scale maps; optional thematic maps; an index of named locations). Secondly, the bibliography included selected items that correspond less to the classic definitions, but the omission of which would distort the global overview of railway-related cartographic products. These are compilations of old and/or contemporary railway maps, arranged thematically and displayed in a specific context. They usually belong to various styles, and are seldom accompanied by a multipage main map. Other types of publications were not included, such as tramway or light rail atlases, unless the urban transit was a part of a publication focused on standard railways, road atlases featuring a rail network, tourist guides, photo albums and monographs on railway history in which cartographic material do not form a principal content, or large-scale technical plans of track layout published in a book form (e.g. Cooke, 2019).

The items comprising the bibliography were subject to a typology. It was developed according to the author's concept based on the analysis of the content of individual products (Tab. 1). Types "A", "B", and "C" concern atlases in the classic meaning. They are differentiated by the nature of information, and the relationship between the time of publication and the state of presented data. This is reflected in a degree to which the atlases are up to date (Ostrowski, 1976; Wood et al., 2010). The obsolescence also changes their purpose over time. A product that was used in daily

Tab. 1. Typology of railway atlases included in the bibliography.

Types and their colour codes:	A		B		C		D		E	
<b>Temporal aspect:</b>	Atlases depicting <b>the current state</b> of railway networks (around the time of publication)		Atlases depicting <b>the historical state</b> of railway networks (published years later)		Atlases depicting both <b>the current and historical state</b> (on map or in descriptive form) of railway networks		<b>Reprints</b> of atlases or sheet maps (reprinted in atlas form only) issued with or without changes		<b>Compilations</b> of old and/or contemporary railway maps presented in specific context	
<b>Style of maps:</b>	Uniform		Uniform		Uniform		Uniform / Various		Various	
<b>Information character:</b>	<ul style="list-style-type: none"> <li>▪ static only</li> <li>▪ becoming out-dated</li> <li>▪ becoming useful as a historical source</li> </ul>		<ul style="list-style-type: none"> <li>▪ static or dynamic</li> <li>▪ no obsolescence</li> <li>▪ useful as a historical source</li> </ul>		<ul style="list-style-type: none"> <li>▪ static or dynamic</li> <li>▪ becoming out-dated</li> <li>▪ always useful as a historical source</li> </ul>		<ul style="list-style-type: none"> <li>▪ static or dynamic</li> <li>▪ out of date</li> <li>▪ still useful as a historical source</li> </ul>		<ul style="list-style-type: none"> <li>▪ static or dynamic</li> <li>▪ becoming out-dated or no obsolescence</li> </ul>	
<b>Number of atlases meeting the criteria:</b>	Titles	Volumes	Titles	Volumes	Titles	Volumes	Titles	Volumes	Titles	Volumes
	119	177	16	32	55	67	44	53	19	19

Source: Own elaboration.

operations of railway companies or for travel planning may become a valuable historical source years later.

In the case of type “C”, historical data may be presented directly on maps, or appear in the descriptive parts, e.g. as a list of opening and closing dates of individual sections of the rail network. Type “D” refers to reprints of atlases or sheet maps, reproduced in atlas form. They may represent uniform or various styles, and their originals date back to before 1945, or are listed as separate items in the bibliography. Compilations are marked by type “E”.

### 3. Bibliography of the railway atlases

Libraries and archives apply well-defined and sophisticated cataloguing standards that also take into account metadata for maps and atlases (Paige, 1999). Despite the worldwide trend of standardisation, there are many variations in how bibliographic information could be recorded (Dwornik, 2018). The following modes are employed in cartography: registers (general lists of products), annotated bibliographies (providing additional information on content and purpose), critical bibliographies, and recommendation bibliographies

(Salishchev, 2003). The bibliography presented here is not associated with a specific cataloguing standard, although it is somewhat consistent with each of the four approaches. Through its tabular layout, it primarily serves as an overall register of railway atlases published since 1945. The accompanying overview description of selected items supplements the information, and features elements of critical assessment and some recommendations for readers.

The records can be found in Tables 2-8 that refer to particular geographic regions, partly divided into smaller territories. Each item was assigned to one of the five types (A–E, Tab. 1) by the colour codes of the first column containing numbering (No. 1-273). The same atlases sometimes appear in more than one list due to their specific spatial extent exceeding the territory represented by a single table segment. This is why the number of records (273) is higher than the total number of unique titles (253). For example, the atlas of railway lines of Poland is placed in Central and Eastern Europe (Tab. 5, No. 179) and in the post-Soviet area (Tab. 6, No. 222), because it additionally provides maps of the Kaliningrad region. Where titles of atlases contain names indicating more than one geographic

area, the relevant parts of the titles were underlined, adequately to the specified territory.

All considered cartographic products are listed in chronological order (from the oldest to the newest), modified by additional grouping features (title, name of author or editor, publisher). The objective is to reduce duplications and optimise the layout. For the same reason, in the case of multi-volume editions, the main title of an atlas is mentioned once, and the titles of subsequent volumes are listed in the same cell with a smaller font. Ellipses were also added to replace repeated sections of adjacent titles published by one author.

The bibliography contains information regarding the number of editions of each atlas, and the year of publication of the first and latest edition. This is important in terms of utility of a given item for research on the dynamics of spatial transformations of railway networks. In some cases, the dates of issue are beyond the adopted time frame. Firstly, it is due to the start of publishing of certain title before 1945 and its continuation after that year. Secondly, the bibliography notes release announcements indicating 2022 or late 2021.

Remarks and explanations are given in square brackets. The BGN/PCGN transliteration and English translation appear next to the original titles in Russian and Ukrainian. Simplified transcription and translation is provided for the titles in Hindi, Mandarin, and Japanese. Czech and Polish titles were also translated. Numerous editions in other languages, i.a. French and German, remain without translation. To make it easier for readers to find the original copies, the ISBNs of the latest editions are displayed, if set by the publishers. In the case of multi-volume titles, the two outermost ISBNs are shown.

There are only two atlas elaborations presenting the railway network of the entire world (Tab. 2, No. 1-2). Each contains a series of maps covering all areas with access to railways in the late 1970's. O. S. Nock's "World Atlas of Railways" includes maps at a scale of approximately 1:3,050,000–1:12,250,000. The "Atlas of the World's Railways" by B. Hollingsworth uses a scale of 1:1,500,000–1:20,000,000. Both items were published in several language versions. More detailed maps can in fact be found in two published volumes belonging to N. Robinson's "World Rail Atlas and Historical Summary" (No. 228). The series, however, intended to depict all lands, has never been completed by its author.

The group of continental atlases (Tab. 3) is dominated by publications from Europe. Elaborations by M. G. Ball stand out in this collection (No. 8-11). His series "European Railway Atlas" was inaugurated in 1991 (No. 94). The first book with maps of the whole continent appeared on the market in 1997 (No. 8).

Since then, the author has been regularly updating and publishing new versions to show the current state of the network, offering the atlases in different variants. In addition to the flagship title, now being called the "Enthusiast Edition" (No. 11), an overview version is available, entitled "Tourist Edition" (No. 10), along with a set of 14 regional atlases for the most demanding users (No. 52-53, 97, 137-139, 167, 173-175, 195-198, 218). Another noteworthy product is "Eisenbahnatlas EU" (No. 15) by German publisher Schweers+Wall. It has gained a reputation for its previously published atlases of Germany, Austria, Switzerland, Italy, and Slovenia (No. 140-142, 199). Hans Schweers (1952-2011) was the co-founder of the publishing house and the main co-author of these elaborations. They have become an indispensable companion for railway enthusiasts, scholars, and active railwaymen in operational service (Lawrenz, 2012).

Almost the entire North American continent, except for the countries of Central America and the Caribbean, is represented by "Professional Railroad Atlas of North America" (No. 20). Each state and a group of metropolitan areas in the USA and Canada have a separate map page, while the Mexican network is limited to three maps. There are no products devoted to Africa, Asia, or Oceania. These continents are mainly represented by the items covering selected countries or regions (Tab. 7).

Two other atlases, not clearly attributable to a specific continent, are worth mentioning here. These are official publications of associations of railway companies at the transcontinental level. The first edition of the atlas produced by the Latin American Railway Association – ALAF (No. 21) dates from 1977. For Central and South America, as well as the Caribbean, it is the only dedicated cartographic product in the form of a printed atlas. A scale of the maps varies from 1:1,000,000 (e.g. Jamaica) to 1:24,000,000 (Brazil). In 2010, an updated digital version was released on CD (*Nueva versión del Atlas...*, 2010). The software offers interactive overview maps together with statistics on the operating companies and demography. In the case of this part of the world, however, more detailed and up-to-date information can be obtained from single-sheet products that often exist online (e.g. *Revista Ferroviária*, 2017; *Asociación Amigos del Ferrocarril Belgrano*, 2021). In 2013, the atlas of countries belonging to the Organization for Cooperation between Railways – OSJD was published (No. 22). It contains accurate maps of all 26 member states in a scale range of 1:800,000–1:5,200,000 (Russia and China – 1:1,500,000), plus overview maps of four observer states. Some of the featured railway networks are rarely found in other cartographic sources. Unfortunately, the title is hardly accessible. It was printed in a trial circulation,

and was not widely distributed because of opposing views on its content among some OSJD members.

Tables 4-8 include information regarding atlases of countries and regions. This part of the bibliography starts with a list devoted to Great Britain and Ireland (Tab. 4). A total of 64 titles are presented here, comprising 80 separate volumes. The significant railway heritage of the British Isles is reflected in the wide variety of themes and timescales. The collection of atlases also refers to the key steps of railway structural transformations in Britain (Wolmar, 2007): pre-grouping – until 1922 (operation of numerous railway companies); the Big Four – 1923-1947 (grouping into four companies: GWR, LMS, LNER, and SR); nationalisation – 1948 (establishment of a single state-owned company British Railways); Beeching cuts – 1960's (mass closures of the lines considered as unprofitable in the opinion of R. Beeching – a controversial chairman of British Railways); privatisation – since 1994.

The products for passengers and enthusiasts were already available there in the 1940's and 1950's. "Sectional Maps of the British Railways" (No. 27) and "British Railways pre-Grouping Atlas and Gazetteer" (No. 33) belonged to the most considerable ones at the time. The first title provides reproductions of the official maps by the Railway Clearing House (RCH). Since the mid-19<sup>th</sup> century, this institution utilised cartographic materials as a tool to help the apportion of conveyance revenue between individual companies on a mileage basis (Challis, Rush, 2009). Over the last decades, some elaborations of RCH have been reprinted (No. 28-32, 76-77). During the period from 1977 to 2020, S. K. Baker published fifteen editions of "Rail Atlas of Britain / Rail Atlas: Great Britain and Ireland" (No. 40). It is widely recognised as an authoritative source showing the current state of the network, also used by professionals. The atlases of the British Isles by M. G. Ball, issued since 1992, serve a similar purpose (No. 49-53). Their two latest versions appeared in 2021 (No. 52-53).

Well-known railway cartographers include John Yonge (1931-2021), a creator of maps and atlases of many places around the world (No. 212, 231, 239, 252-254). He was the initiator and first author of the six-volume series entitled "British Rail Track Diagrams", now available as "Railway Track Diagrams" (No. 43). Another remarkable person was Colonel Michael H. Cobb (1916-2010) – the author of the two-volume "The Railways of Great Britain: A Historical Atlas" (No. 62). For this outstanding work, Col. Cobb, aged 91, was awarded a PhD from the Cambridge University (*Colonel...*, 2019). The atlas, first published in 2003, is the result of 18 years of research that began in 1978. It is the most comprehensive cartographic study showing the entire railway network of England, Wales, and Scotland between 1807 and 1994. The maps are drawn

on the Ordnance Survey topographic base at a scale of 1 inch to 1 mile (1:63,360).

Complex railway systems of selected urban areas (Greater London, Birmingham, West Midlands, Merseyside, Greater Manchester) and their history were presented by J. Brown in three atlases (No. 64, 66, 67), with even more detailed maps (a scale of approximately 1:27,270). The elaborations belonging to the "Then and Now" series by P. Smith, K. Turner, and P. Jordan (No. 72-73, 81-82) are also noteworthy. They contain two parallel sets of maps, allowing comparison of the current state with the peak period of the network development in the 1920's.

Railway atlases from continental Europe (excluding the post-Soviet area) are listed in Tab. 5. They represent 102 unique titles and 111 volumes. The oldest items constitute the atlases forming the series "Géographie universelle des transports", published between 1946 and 1966. Their author was Henri Lartilleux (1904-1989), a long-time employee of French railway companies (PLM, SNCF), and a passionate transport geographer (Ribeill, 2017). Part one of the series, entitled "Géographie des chemins de fer français", comprises four volumes two of which cover the European part of France (No. 87 and their reissue as No. 88). Volumes 3-4 present the French colonies in Africa and Asia (No. 225, 251). Part two of the series, "Géographie des chemins de fer d'Europe", consists of two volumes (No. 89, 107, 184-185) covering Switzerland, Italy, Belgium, the Netherlands, Luxembourg, Spain, and Portugal. These studies describe the history and contemporary state of the railway networks from a mid-20<sup>th</sup> century perspective, through numerous maps prepared by cartographer R. Quémé based on the sketches of H. Lartilleux.

Among the titles representing 21<sup>st</sup> century France, "Atlas du réseau ferré en France" is worth mentioning (No. 101). It is an official publication of the SNCF, available for free as a pdf. Apart from the main map at a scale of 1:800,000, thematic maps are a valuable addition, particularly those featuring traffic flows on the network. The northern part of France is also shown in the atlas by Schweers+Wall at a scale of 1:300,000 (No. 103). For the French and Benelux area, the atlases by M. G. Ball have been regularly updated since 1991 (No. 94-97). The 2019 version is currently available as a part of the "Regional Series". The latest product, focused on depicting all past and present railway infrastructure, is L. Claudel's three-volume "Atlas historique des chemins de fer français" (No. 105). The final volume will be released in 2022.

The largest share of the discussed group of atlases concerns German-speaking countries (58 titles). The two-part work by H. Kobschätzky entitled "Streckenatlas der deutschen Eisenbahnen" is of great value



from a historical point of view (No. 111-112). It documents the evolution of German and Austrian railway networks until 1935. For Switzerland, such a function is fulfilled by H. G. Wägli's "Schienennetz Schweiz. Ein technisch-historischer Atlas" (No. 120). The period of the division into West Germany (FRG) and East Germany (GDR) between 1949 and 1990 was characterised by different attitudes towards providing railway atlases to the public. In the FRG, passengers could use dedicated products already in the 1950's (No. 108). In the GDR, the first publicly available atlases did not appear before the 1980's (No. 126, 129). In terms of content, however, they varied from those designed exclusively for official use (No. 109, 113). As an example, the official "Atlas DR" contains an accurate map of entire Berlin, with its western part, at a scale of 1:100,000. The "Eisenbahnatlas DDR" depicts a complete railway network only for East Berlin at twice smaller scale.

The reunification of Germany was followed by an expansion of the range of railway atlases, with the products of Schweers+Wall leading the way since 1994, including those for Germany, Austria, and Switzerland (No. 140-142; scale range 1:150,000–1:300,000). Two of these titles received patronage of railway companies DB and ÖBB. Numerous reprints were also produced, among which the ones offered by the Rockstuhl publishing house deserve particular attention (No. 110, 115-118, 125, 151-160). Some of them are former single-sheet maps converted to an atlas form.

In the countries of Central and Eastern Europe (here limited to Poland, Czechia, Slovakia, and Hungary), atlases designed for passengers and enthusiasts began to be produced even later than in East Germany. Although in the case of Poland, "Atlas odległości taryfowych..." already existed in the 1950's, it was used exclusively by railwaymen to calculate passenger and freight tariffs (No. 168). Soon after the political changes of the early 1990's, the railway network of this part of Europe was drawn by M. G. Ball in 1993 (No. 169). More detailed elaborations, accompanied with historical data, began to be published as late as in the 21<sup>st</sup> century. In 2004, a railway atlas of the Czech Republic appeared for the first time, at a scale of 1:200,000 (No. 177). For the territory of Poland, it only happened in 2010. The atlas at a scale of 1:300,000 was developed by R. Stankiewicz and M. Stiasny (No. 179). Soon after, a version reduced to the map part, more convenient for use on the move, was released (No. 180). It should be pointed out that in the period 2007-2008, M. G. Ball already offered separate booklets for the countries of the region (No. 170-172). These were extracts from the complete "European Railway Atlas" (No. 9). Since 2014, however, he has been regularly publishing new atlases as a part of the "Regional Series"

(No. 173-175). Between 2018 and 2019, elaborations of contemporary Czech and Slovak networks were published by Polish authors H. Waguła and S. Fedorowicz (No. 181-182).

Next to the previously mentioned works by H. Lartilleux (No. 184-186), Southern Europe is well documented owing to the series of atlases by M. G. Ball (No. 191-198). Several countries are also covered by other works. In the case of Spain, two atlases from two different eras exist, namely before and after the high-speed lines were put into operation (No. 190, 201). In addition to the atlas of Italy and Slovenia (No. 199), Schweers+Wall offered a new product for Greece since 2018, with a scope of historical data broader than in the previous items (No. 200).

The post-Soviet area is depicted in atlases from Tab. 6. It contains 23 titles, 9 of which were published outside today's Russia. In the USSR, the production of railway atlases was centralised in government cartographic companies. Albums with diagrams of networks belonging to particular regions had already been created in the 1930's, and were printed in a similar form over the following decades until 1990 (No. 202-205, 210). These products, however, were exclusively for official use. The first pocket atlases dedicated to passengers were published in the 1960's (No. 206). They featured sets of routes presented on small excerpts of maps, without any spatial relations between them, and even with no indication of the northern direction (No. 207-208). Some improvements were only introduced in the 1980's (No. 209). After the collapse of the USSR in 1991, the production was passed to the Omsk-based branch of Roskartografiya company. The preparation of publicly accessible items (No. 211, 213-215) involved the use of the documentation and templates from the Soviet times. These atlases continue to cover all countries of the former USSR. An extreme example is "Atlas skhem zheleznikh dorog gosudarstv-uchastnikov SNG...", last published in 2019 (No. 213). Its structure and graphic style have changed very little in comparison to the atlases of the 1940's. A completely new and comprehensive product is "Atlas zheleznikh dorog Rossii" from 2015 (No. 223). It is a 680-page compilation of historical and contemporarily elaborated maps, combined with extensive description and photographic material. The items published outside Russia have meanwhile focused on the Baltic states, Kaliningrad region, Belarus, Ukraine, Moldova (No. 212, 217-222), and the Caucasus area (No. 216).

Table 7 contains bibliographic data of titles illustrating countries and regions belonging to Africa, Asia, and Australasia. The African railway network is shown fragmentarily in five atlases with varying accuracy. Two volumes published by H. Lartilleux in the

period 1949-1950 (No. 225) present areas of the French colonies in North and Equatorial Africa. The second part of H. Kobschätzky's work contains a section on the origins of railways within the former German colonies (No. 226). More recent studies, omitting the area of South West Africa, are parts of the incomplete series: "Railway Networks in West Africa – T. 1" (No. 227) and "World Rail Atlas and Historical Summary – vol. 7: North, East and Central Africa" (No. 228). The author of the second title, N. Robinson, also published the only atlas covering much of the Middle East (No. 228). Among two items presenting the territory of India, the most detailed maps, at a scale of 1:1,000,000, are contained in the third edition of "The Great Indian Railway Atlas" by S. Roychoudhury (No. 230).

It should be stressed that not all products published after 1945 for the areas of China, Hong Kong, Mongolia, Korea, Taiwan, and Japan (No. 231-250) were included in the bibliography. Due to language barriers, the author was unable to account for the items that do not belong to his own collection or are not listed in online resources. J. Yonge's atlases from the 1970's and early 1990's are the earliest recorded ones (No. 231, 239). Chinese cartographic products, issued in the 21<sup>st</sup> century, are publicly available. The leading elaboration is the "Zhonghua Renmin Gongheguo Tielu Dituji / Railway atlas of People's Republic of China" (No. 233), with the main map at a scale of 1:1,100,000–1:2,900,000. A smaller version with no scale (No. 234) is more popular, however. The latest edition dates back to 2015. Considering the rate of the Chinese rail network development, that means the content is already out of date.

Japan has a more diverse range of railway atlases (No. 239-250). The most accurate and single-volume study is currently "Zenkoku Tetsudo Chizu Cho / National Railway Atlas" (No. 247) from 2020, containing maps at a scale of 1:250,000. A decade earlier, the same publisher offered an atlas divided into 7 regional parts, made at a scale of 1:350,000 (No. 246). Similar products appeared in 12 volumes, sold as monthly magazines (No. 240, 242-243). Japanese atlases with a special purpose are noteworthy, e.g. those for observing landscape around the Tokaido Shinkansen

line from a train window (No. 248), or for marking the travelled routes (No. 250).

A valuable source of information on railway networks in the Indochinese Peninsula until the mid-20<sup>th</sup> century is the fourth volume by H. Lartilleux regarding French overseas colonies (No. 251). The study by B. R. Whyte (No. 256) is equally interesting. It contains an extensive historical description, and pages with contemporary railway maps of Thailand, Laos, and Cambodia. The Australian railway network has not yet been fully mapped by a comprehensive atlas. A book entitled "Australian Railway Routes 1854-2000" only offers a diagrammatic presentation of the network (No. 255). Unfortunately, J. Yonge only managed to publish the first volume of the planned "Australian Railway Atlas" covering Tasmania (No. 254). Much earlier, however, he had prepared diagrams for the metropolitan areas of the New South Wales (No. 253). He was also the author of several editions of the only atlas presenting the railway network of New Zealand (No. 252).

The last section of the bibliography (Tab. 8) contains 17 items related to the countries and regions of North America. In this collection, three titles deserve particular attention. The first one is the "Handy Railroad Atlas of the United States" (No. 257), published regularly between 1928 and 1988 by the Rand McNally company. Its unified style allows for a comparative analysis of maps from subsequent editions, and observation of stages of transformation of the railway network. Richard C. Carpenter (1933-2020) prepared the five-volume series "A Railroad Atlas of the United States in 1946" (No. 269). The hand-drawn maps at a scale of 1 inch to 4 miles (approximately 1:250,000) depict the north-eastern states. They show the network at a peak of its spatial development. Finally, an atlas with twice smaller scale of the main maps covering the entire United States and Canada is M. Walker's twenty-volume series "SPV's Comprehensive Railroad Atlas of North America", published during the period 1993-2011 (No. 264) and partially reprinted in 2020 (No. 265). This is the only such extensive and accurate publication presenting the situation at the turn of the 21<sup>st</sup> century.

Tab. 2. Railway atlases of the world.

No.	Title / Alternative Title	Author / Editor	No. of Editions	Year of Publication		Publisher (Place of Publication)	ISBN of the Latest Edition
				1 <sup>st</sup> Ed.	Latest Ed.		
1.	World Atlas of Railways	Nock O. S.	2	1978	1980	Intercontinental Book Productions for Artists House (London)	0861340035
			1	1979		Mayflower Books (New York)	083179500X
			1	1983		Victoria House (Bristol) / Bonanza Books (New York) / Colporteur Press (Sydney)	0907874053 / 0517419785 / 0863990002
	Wereldspoorwegatlas		1	1979		Elsevier (Amsterdam)	9010026922
	Der große Atlas der Eisenbahnen		2	1980	1988	Delphin-Verlag (Munich-Zürich)	3773550405
2.	Atlas of the World's Railways	Hollingsworth B.	1	1979		Bison Books Ltd (London)	0861240235
	All Världens järnvägar		1	1980		Everest House (New York)	0896960439
	Atlas international des chemins de fer		1	1981		Stenvall (Malmö)	9172660511
	Railways of the World		1	1983		Pierre Bordas et Fils (Paris)	2863110659
			1	1984		Colporteur Press (Sydney)	0863990185
			1	1985		Gallery Books (New York)	0831704926
3.	Atlas of ERTMS: world-wide implementation	International Union of Railways	3	2007	2012	UIC – Rail System Department (Paris)	9782746120785
	ERTMS Atlas [DVD]		1	2014			9782746122840
4.	Atlas High-Speed Rail		3	2018	2021	UIC – High Speed Department (Paris)	9782746131033
5.	The Historical Atlas of World Railroads	Westwood J.	1	2009		Firefly Books (Buffalo)	1554075238
	The Historical Atlas of World Railways		1	2009		Cartographica Press (London)	1845734289
	Der grosse historische Atlas der Eisenbahn		1	2009		Tosa Verlag (Vienna)	385003397X
6.	Railway Maps of the World	Ovenden M.	1	2011		Viking Books (New York)	9780670022656
	Great Railway Maps of the World		2	2011	2015	Particular Books (London) / Penguin Books (London)	9780241954089

Source: Own elaboration based on the author's collection and data published in portals: WorldCat, ETF Online Shop.



Tab. 3. Continental and transcontinental railway atlases.

No.	Title / Alternative Title [Transliteration / Translation]	Author / Authors / Editor / Editors	No. of Editions	Year of Publication		Publisher (Place of Publication)	ISBN of the Latest Edition
				1 <sup>st</sup> Ed.	Latest Ed.		
<b>Europe</b>							
7.	Europa-Eisenbahn-Atlas: das unentbehrliche Handbuch für alle Eisenbahnreisenden in Europa	Stricker U., Stricker H.	1	1983		Kümmerly+Frey (Bern)	3259032363
	Atlas des chemins de fer d'Europe: indispensable à tous ceux qui prennent le train en Europe		1	1983		La Vie du Rail (Paris)	3259032371
						Vilo (Paris)	2902808127
8.	European Railway Atlas [ABC Series]	Ball M. G.	1	1997		Ian Allan Publishing (Shepperton)	0711025231
9.	European Railway Atlas [Complete Atlas]		11	2008	2013	European Railway Atlas (Wrexham)	-
	.... All Europe - Concise Edition		2	2016	2017		9781999787516
10.	.... Tourist Edition		2	2019	2020		9781916121287
11.	.... Enthusiast Edition		1	2020			9781916121294
12.	Bahn-Atlas Europa (Bahn-Extra: 2/2004)	Bauchhenß W. et al.	1	2004			GeraNova Zeitschriftenverlag (Munich)
13.	Eisenbahnatlas Europa	Koch K. W.	2	2006	2012	GeraMond Verlag (Munich)	9783862451203
14.	UIC Atlas 2008 of infrastructure, investments, traffic and capacity in the ERIM Network	Editorial board (UIC)	1	2009		International Union of Railways (Paris)	9782746116184
15.	Eisenbahnatlas EU	Clemens L. et al.	3	2013	2017	Schweers+Wall (Cologne)	9783894941475
	Rail Atlas Europe		1	2015		Ian Allan Publishing (Hersham)	9780711038080
16.	Railway Atlas Europe	Ross C.	1	2015		Solitaire Contracts (Manchester)	9781515002307
17.	RailPass RailMap Europe		6	2015	2019		9781911165248
18.	RailMap Europe: Night Train Special / RailPass RailMap Europe: Night Trains		4	2017	2019		9781911165286
	RailPass InfoRailMap: Icon and Info Illustrated Railway Atlas		2	2020	2021		9781911165477
<b>North America</b>							
20.	Professional Railroad Atlas of North America: United States, Canada, Mexico	Railroad Information Services	4	1998	2012	DeskMap Systems (Austin)	9781929324033
<b>Asociación Latinoamericana de Ferrocarriles (ALAF) [Latin American Railway Association]</b>							
21.	Atlas Ferroviario Latinoamericano	Pugliese E. C. et al.	3	1977	2010 [CD]	ALAF (Buenos Aires)	-
<b>Организация Сотрудничества Железных Дорог (ОСЖД) [Organizatsiya Sotrudnichestva Zheleznikh Dorog (OSZHD) / Organization for Cooperation between Railways (OSJD)]</b>							
22.	Атлас железных дорог стран ОСЖД [Atlas zheleznikh dorog stran OSZhd / Railway atlas of the OSJD countries]	Beskov S. K. et al.	1	2013		ZAO "Assotsiirovannyi Kartograficheskiy Tsentr-M" (Moscow)	-

Source: Own elaboration based on the author's collection and data published in portals: WorldCat, AbeBooks, eBay.

Tab. 4 (Part 1). National and regional railway atlases of Great Britain and Ireland.

No.	Title / Alternative Title	Author / Authors / Editor / Editors	No. of Editions	Year of Publication		Publisher (Place of Publication)	ISBN of the Latest Edition
				1 <sup>st</sup> Ed.	Latest Ed.		
23.	The Journey Mile by Mile. Travelling On The Southern Railway	Pike S. N.	3	1946	1988 [reprint]	Stuart N. Pike (Shepperton / Worthing) / Silver Link (Wadenhoe)	0947971882
24.	Mile by Mile on the L.N.E.R.		2	1947			0947971890
25.	Mile by Mile on the L.M.S.		2	1948			0947971904
26.	Mile by Mile on Britain's Railways: The LNER, LMS, Southern Railway and Great Western Railway main lines. As they were in 1947 / Mile by Mile: An Illustrated Journey on Britain's Railways ...	Pike S. N., Piggott R., Thompson M.	4	2011	2017	Aurum Press (London)	9781781316412
27.	Sectional Maps of the British Railways (Railway map of England & Wales and Scotland) / British Railway's Sectional Maps	Railway Clearing House	1	1948		Ian Allan (London) / Ian Allan Publishing (Shepperton / Hersham)	-
28.	Sectional Maps of the British Railways: As at December 1947		1	1981			0711011567
29.	Pre-Grouping Railway Junction Diagrams 1914		1	1982			0711012563
30.	British Railways Atlas 1947. The last days of the Big Four		5	1987	2011		9780711036437
31.	Atlas of England & Wales 1904		1	2001			0711027781
32.	Atlas of London 1935		1	2001			0711027897
33.	British Railways Pre-Grouping Atlas and Gazetteer	Connolly W. P., Vincent U. A.	5	1958	1967	0711003203 [1997 reprint]	
34.	British Railways Pre-Grouping Atlas and Gazetteer. New 6th Edition. Revised & Enlarged		1	2015		9780711038172	
35.	Sectional Maps of British Railways (British Rail Atlas)	Editorial team	1	1967		-	
36.	Sectional Maps of Britain's Railways: As at January 1982 / ...: With Gazetteer	Antell R. / Jacobs G. A.	3	1982	1989	0711017999	
37.	Sectional Maps of Britain's railways as at 2002	Editorial team	1	2002		0711028788	
38.	Railway Junction Diagrams 1915	R. Clearing House	1	1969		-	
39.	A Railway Atlas of Ireland	Maxwell Hajducki S.	1	1974		-	
40.	Rail Atlas of Britain / Rail Atlas: Great Britain and Ireland	Baker S. K.	15	1977	2020	OPC Oxford Publishing (Oxford) / Ian Allan Publishing (Hersham) / Crécy Publishing (Manchester)	9780860936817
41.	Complete British Railways Maps and Gazetteer from 1830-1981 / ... from 1825-1985. Fully Revised Edition	Wignall C. J.	2	1983	1985	OPC Oxford Publishing (Oxford / Poole)	086093294X
42.	The Atlas of British Railway History	Freeman M., Aldcroft D.	4	1985	2019 [reprint]	Croom Helm (London-Sydney-Dover-New Hampshire) / Routledge (London / Abingdon-New York)	9781138566538
43.	British Rail Track Diagrams / Railway Track Diagrams – 6 vols.: 1. ScotRail / Scotland and the Isle of Man / Scotland & Isle of Man; 2. Eastern & Anglia Regions / England: East / Eastern; 3. Western Region / Great Western / Western / Western & Wales; 4. London Midland Region / Midlands & North West; 5. England South and London Underground / Southern & TfL; 6. Ireland	Yonge J., Brailsford M., Munsey M.	2 [v. 6] / 4 [v. 4-5] / 5 [v. 2] / 6 [v. 1, 3]	1987- 1995	2004- 2020	Quail Map Company (Exeter) / Trackmaps (Bradford on Avon / Beckington, Frome)	9780954986698 ... 9781999627133

Tab. 4 (Part 2). National and regional railway atlases of Great Britain and Ireland.

No.	Title / Alternative Title [Remarks]	Author / Authors / Editor / Editors	No. of Editions	Year of Publication		Publisher (Place of Publication)	ISBN of the Latest Edition
				1 <sup>st</sup> Ed.	Latest Ed.		
44.	Atlas of the Great Western Railway as at 1947	Cooke R. A.	2	1988	1997	Wild Swan Publications (Didcot)	1874103380
45.	Jowett's Railway Atlas of Great Britain & Ireland. From pre-Grouping to the present day	Jowett A.	1	1989		Patrick Stephens Limited (Wellingborough)	1852600861
46.	Jowett's Atlas of Railway Centres of Great Britain showing their development from the earliest times up to and including the 1990s – Vol. 1		1	1993		Patrick Stephens Limited (Sparkford)	1852604204
47.	Jowett's Nationalised Railway Atlas of Great Britain & Ireland with the privatised situation as at the 31st December 1993		1	2000		Atlantic Publishers (Penryn)	0906899990
48.	British Railway Maps of Yesteryear	Editorial team	1	1991		Ian Allan (London)	0711020191
49.	British Isles Railway Atlas / European Railway Atlas: British Isles	Ball M. G.	2	1992	1996	Ian Allan Publishing (Shepperton / Hersham)	0711024073
50.	British Railways Atlas / British Railway Atlas [ABC Series]		4	1995	2014		9780711038035
51.	European Railway Atlas: Britain & Ireland [Extract Atlas]		6	2007	2013	-	
52.	...: Britain & Ireland [Regional Series]		4	2013	2019/21	European Railway Atlas (Wrexham)	9781916121249
53.	British Isles Railway Atlas		1	2021			9781838488604
54.	Midland Railway System Maps (The Distance Diagrams) – 6 vols.: Carlisle to Leeds; Leeds to Leicester, Derby to Manchester, Cheshire Lines; Leicester to London, M&GN, LTS; Birmingham to Bristol, South Wales, S&D; Historical Introduction,...; The Gradient Diagrams	Kay P.	1 [v. 2-6] / 2 [v. 1]	1992-1999	1997-1999	Cumbrian Railways Association (Grange-over-Sands) / Peter Kay (Teignmouth)	1899890165 ... 1899890289
55.	Signalling Atlas and Signal Box Directory: Great Britain & Ireland	Kay P. et al.	3	1997	2010	Peter Kay (Teignmouth) / Signalling Record Society (Wallasey)	9781873228319
56.	Johnson's Atlas & Gazetteer of the Railways of Ireland	Johnson S.	1	1997		Midland Publishing (Leicester)	1857800443
57.	Atlas of Train Operating Companies	Editorial team	2	2000	2006	Ian Allan Publishing (Shepperton / Hersham)	071103138X
58.	British Railway Atlas 1955 [Britain's Railways Series]		1	2000			0711027269
59.	Rail Atlas 1970 [Britain's Railways Series]		1	2003			0711029652
60.	Complete Atlas of Railway Station Names	Dewick T.	1	2002			0711027986
61.	Rail Atlas 1890 [Britain's Railways Series]		1	2005			0711030316
62.	The Railways of Great Britain: A Historical Atlas [1807-1994] – 2 vols.: Volume 1 [England and Wales]; Volume 2 [Scotland]	Col. Cobb M. H.	3	2003	2015	Ian Allan Publishing (Shepperton) / Patrick S. Cobb (Newbury)	9780993101304 9780993101311
63.	Railways of Britain – 6 vols.: Norfolk and Suffolk; Kent and Sussex; Devon and Cornwall; Cheshire and Shropshire; London North of the Thames; London South of the Thames	McCarthy C., McCarthy D., Col. Cobb M. H.	1	2007-2010		Ian Allan Publishing (Hersham)	9780711032231 ... 9780711033474
64.	London Railway Atlas	Brown J.	5	2006	2018	Ian Allan Publishing (Hersham) / Crécý Publishing (Manchester)	9780860936893
65.	London Railway Atlas [ABC Series]		1	2015			9780711038189
66.	Birmingham and West Midlands Railway Atlas		1	2016			9780711038400
67.	Liverpool & Manchester Railway Atlas		1	2021			9780860936879



Tab. 4 (Part 3). National and regional railway atlases of Great Britain and Ireland

No.	Title / Alternative Title [Remarks]	Author / Authors / Editor / Editors	No. of Editions	Year of Publication		Publisher (Place of Publication)	ISBN of the Latest Edition
				1 <sup>st</sup> Ed.	Latest Ed.		
68.	TRACKatlas of Mainland Britain: A Comprehensive Geographic Atlas Showing the Rail Network of Britain	Bridge M.	3	2009	2017	Trackmaps (Bradford on Avon) / Platform 5 (Sheffield)	9781909431263
69.	Mapping the Railways: The Journey of Britain's Railways Through Maps from 1819 to the Present Day	Holland J., Spaven D.	2	2011	2013	Times Books / Collins (Glasgow)	9780007506491
70.	Bradshaws Railway Atlas: Great Britain and Ireland 1852	Line P. L.	1	2012		Mapseeker Archive (Truro)	9781844917907
71.	Mile by mile <u>London</u> to Paris: The entire railway journey by historic Golden Arrow and modern Eurostar mapped for the interested traveller	Piggott R., Thompson M.	1	2012		Aurum Press (London)	9781845137724
72.	Railway Atlas: Then and Now	Smith P., Turner K.	3	2012	2019	Ian Allan Publishing (Hersham) / Crécy Publishing (Manchester)	9780860936985
73.	Railway Atlas of Ireland: Then and Now		1	2014			9780711037960
74.	Rail Atlas: The Beeching Era. Proposed – Closed – Survived	Waller P.	1	2013		Ian Allan Publishing (Hersham / Addlestone)	9780711035492
75.	Rail Atlas 1939-1945		1	2014			9780711036307
76.	Pre-Grouping Atlas and RCH Junction Diagrams [enlarged reprint]		1	2014			9780711038103
77.	British Railways Atlas 1947 and RCH Junction Diagrams [enlarged reprint]	Editorial team / Railway Clearing House	1	2016			9780711038578
78.	The Railway Atlas of Scotland: Two Hundred Years of History in Maps	Spaven D.	1	2015		Birlinn (Edinburgh)	9781780272382
79.	Atlas of the Southern Railway [1838-1948]	Harman R., Nichols G.	1	2016		Ian Allan Publishing (Hersham)	9780711038295
80.	Macauley's Station Map of the 1881 Railways of Great Britain & Airey's Junction Diagrams	Macauley Z., Airey J.	1	2016			9780711038554
81.	London Railway Atlas: Then and Now	Jordan P., Smith P.	1	2016		Crécy Publishing (Manchester)	9781908347435
82.	Scottish Railway Atlas: Then and Now		1	2021			9781800350342
83.	Atlas of Railway Station Closures	Editorial team	2	2018	2020		9780860936978
84.	An Atlas of the Railways in South West and Central Southern England including the Channel Islands, from 1731 to the present day	Malthouse S.	1	2019			9780711038714
85.	The First Railways: Atlas of Early Railways / The First Railroads: Atlas of Early Railroads	Hayes D.	1	2017		Times Books (Glasgow) / Firefly Books (Buffalo)	9780008249489 9780228100096
86.	The Complete Atlas of 200 Years of Railway Stations in the British Isles	Smith R. S.	1	2022 [to be published]		Trackmaps (Beckington, Frome)	-

Source: Own elaboration based on author's collection and data published in portals: WorldCat, AbeBooks, eBay, National Railway Museum Library Catalogue, Trackmaps.

Tab. 5 (Part 1). Railway atlases of countries and regions in continental Europe excluding the post-Soviet area.

No.	Title / Alternative Title [Remarks]	Author / Authors / Editor / Editors	No. of Editions	Year of Publication		Publisher (Place of Publication)	ISBN of the Latest Edition
				1 <sup>st</sup> Ed.	Latest Ed.		
<b>France and Benelux</b>							
87.	Géographie universelle des transports. T. I: Géographie des chemins de fer français – 2 vols.: 1. La S.N.C.F.; 2. Réseaux divers	Lartilleux H.	6 [v. 1] / 2 [v. 2]	1946 -1948	1950 -1955	Librairie Chaix / Chaix-Desfossés-Néogravure (Paris)	-
88.	... T. I: Géographie des chemins de fer français – S.N.C.F. et réseaux divers		4	1956	1966		-
89.	... T. II: Géographie des chemins de fer d'Europe – 2. Belgique, Hollande, Grand-Duché de Luxembourg, Espagne, Portugal		1	1953			-
90.	Atlas des lignes ouvertes au trafic marchandises	Institut Géographique National	2	1964	1980	SNCF (Paris)	-
91.	Atlas der Eisenbahnen des Deutschen Reiches, Oesterreich-Ungarns, Belgiens, der Niederlande, Italiens und der Schweiz [1886]	Nietmann W.	1	1983		Horst-Werner Dumjahn Verlag (Mainz)	3921426278
92.	Atlas der Eisenbahnen Deutschlands, Oesterreich-Ungarns, Belgiens, der Niederlande, Italiens und der Schweiz [1886]		1	2012		Melchior Historischer Verlag (Wolfenbüttel)	9783942562683
93.	Eisenbahn-Atlas von Deutschland, Belgien, Elsass und dem nördlichsten Theile von Italien [1847]	Stülpnagel F. von, Bär J. Ch.	1	1985		Ursula Hinrichsen Verlag (Holzminden)	3922293077
94.	European Railway Atlas: France, Netherlands, Belgium, Luxembourg	Ball M. G.	2	1991	1994	Ian Allan Publishing (Shepperton)	071102328X
95.	European Railway Atlas: France [Extract Atlas]		18	2007	2013	European Railway Atlas (Wrexham)	-
96.	...: Benelux [Extract Atlas]		15	2007	2013		-
97.	...: France & Benelux [Regional Series]		3	2014	2019		9781999787547
98.	Atlas du réseau ferré national	SNCF	4	1994	2007	SNCF (Paris)	-
99.	Atlas ferroviaire. France	Tricoire J., Bejul P.	9	2004	2020	Le Train (Betschdorf)	ISSN 12965537
100.	Le train en France. Toutes les lignes, toutes les gares	Editorial team	1	2007		Itinéraires et Territoires (Paris)	3760097443360
101.	Atlas du réseau ferré en France	Editorial team	1	2013			3760097443179
		SNCF Réseau	3	2015	2020	SNCF Réseau (Paris)	-
102.	Mile by mile London to Paris: The entire railway journey by historic Golden Arrow and modern Eurostar ...	Piggott R., Thompson M.	1	2012		Aurum Press (London)	9781845137724
103.	Eisenbahnatlas Frankreich. Band I NORD / Atlas ferroviaire de la France. Tome I NORD	Wüdig T.	1	2015		Schweers+Wall (Cologne)	9783894941437
104.	Toutes les lignes & les gares de France en cartes: l'annuaire Pouey de 1933 [enlarged reprint]	Lamming C.	1	2019		LR Presse (Auray)	9782375360262
105.	Atlas historique des chemins de fer français – 3 vols.: Tome 1. Corse, Nouvelle-Aquitaine, Occitanie, Provence-Alpes-Côte d'Azur; Tome 2. Bretagne, Centre-Val de Loire, Hauts-de-France, Ile-de-France, Normandie, Pays de la Loire; Tome 3. Grand Est, Bourgogne, Franche-Comté, Auvergne, Rhône-Alpes	Claudel L.	1	2020-2022 [vol. 3 to be published]		La Vie du Rail (Paris)	9782370620880 9782370620927

Tab. 5 (Part 2). Railway atlases of countries and regions in continental Europe excluding the post-Soviet area.

No.	Title / Alternative Title [Remarks]	Author / Authors / Editor / Editors	No. of Editions	Year of Publication		Publisher (Place of Publication)	ISBN of the Latest Edition
				1 <sup>st</sup> Ed.	Latest Ed.		
<b>Germany, Austria and Switzerland</b>							
106.	Bahn-Atlas: Eisenbahn-Handbuch in Karten, Registern und Tabellen für Versand, Reise und Organisation – 3 vols.: Teil 1. Bahnhofs-Verzeichnis; Teil 2. Kartenwerk; Teil 3. Tabellen für Versand, Reise und Organisation	Palmer H.	1	1949		Forkel-Verlag (Stuttgart)	-
107.	Géographie universelle des transports. T. II: Géographie des chemins de fer d'Europe – 1. Suisse-Italie	Lartilleux H.	1	1951		Librairie Chaix (Paris)	-
108.	DB Atlas. Bildkarten von Leo Faller	Faller L.	1	circa 1958		Horst Siebert Verlag (Berlin)	-
109.	Eisenbahn-Verkehrskarte der Deutschen Demokratischen Republik	Ministerium für Verkehrswesen	1	1967		Ministerium für Verkehrswesen (Berlin)	-
110.	Atlas DR 1967. Eisenbahnstreckenlexikon der Deutschen Reichsbahn		1	2006		Verlag Rockstuhl (Bad Langensalza)	9783938997055
111.	Streckenatlas der deutschen Eisenbahnen 1835-1892	Kobschätzky H.	1	1971		Alba Buchverlag (Düsseldorf)	-
112.	Streckenatlas der deutschen Eisenbahnen 1893-1935		1	1975			387094028X
113.	Atlas DR: Deutsche Demokratische Republik	Ministerium für Verkehrswesen / Drucksachenverlag der Deutschen Reichsbahn	4	1976	1989	Drucksachenverlag der Deutschen Reichsbahn (Berlin)	-
114.	Atlas DR: Deutsche Demokratische Republik [1976]		1	2015		GVE-Verlag (Berlin)	9783892189763
115.	Atlas DR 1979. Eisenbahnstreckenlexikon der Deutschen Reichsbahn		1	2016		Verlag Rockstuhl (Bad Langensalza)	9783959661515
116.	Atlas DR 1987. ...		1	2016			9783959661522
117.	Atlas DR 1989. ...		1	2016			9783959661539
118.	Atlas DR 1976. ...		1	2021			9783959665780
119.	Grosser Eisenbahn-Atlas Schweiz	Bützer H. P., Jeker M.	1	1980		Kümmerly+Frey (Bern)	3259032347
120.	Schienennetz Schweiz. Ein technisch-historischer Atlas / Réseau ferré suisse. Atlas technique et historique / ... Bahnprofil Schweiz CH+ / ... Le rail suisse en profil CH+	Wägli H. G.	3	1980	2010	Generalsekretariat SBB (Bern) / AS Verlag (Zürich)	9783909111749
121.	DB Touristik Atlas. Städtetouren, Pauschal, Urlaub mit der Bahn	Micklei M.	1	1981		Deutsche Bundesbahn / Mairs Geographischer Verlag (Ostfildern)	3875040171
122.	Atlas der Eisenbahnen <u>des Deutschen Reiches</u> , <u>Oesterreich-Ungarns</u> , <u>Belgiens</u> , <u>der Niederlande</u> , <u>Italiens</u> und <u>der Schweiz</u> [1886]	Nietmann W.	1	1983		Horst-Werner Dumjahn Verlag (Mainz)	3921426278
123.	Eisenbahn-Atlas Deutschland/Schweiz 1879 / Taschen-Atlas der Eisenbahnen Deutschlands und der Schweiz		1	1990		Peter Sem Verlag (Bamberg)	3926040149
124.	Atlas der Eisenbahnen <u>Deutschlands</u> , <u>Oesterreich-Ungarns</u> , <u>Belgiens</u> , <u>der Niederlande</u> , <u>Italiens</u> und <u>der Schweiz</u> [1886]		1	2012		Melchior Historischer Verlag (Wolfenbüttel)	9783942562683



Tab. 5 (Part 3). Railway atlases of countries and regions in continental Europe excluding the post-Soviet area.

No.	Title / Alternative Title [Remarks]	Author / Authors / Editor / Editors	No. of Editions	Year of Publication		Publisher (Place of Publication)	ISBN of the Latest Edition
				1 <sup>st</sup> Ed.	Latest Ed.		
<b>Germany, Austria and Switzerland</b>							
125.	Landkarten Deutsches Reich mit Oesterreich-Ungarn und der Schweiz. Eisenbahnstrecken 1895 / Atlas der Eisenbahnen des Deutschen Reiches, Oesterreich-Ungarns und der Schweiz	Nietmann W.	1	2016		Verlag Rockstuhl (Bad Langensalza)	9783959661300
126.	Links und rechts der kleinen Bahnen: Schmalspurstrecken zwischen Ostsee und Erzgebirge	Wendt T.	4	1983	1989	VEB Tourist-Verlag (Berlin-Leipzig)	3350002919
127.	Eisenbahn-Atlas von <u>Deutschland</u> , Belgien, Elsass und dem nördlichsten Theile von Italien [1847]	Stülpnagel F. von, Bär J. Ch.	1	1985		Ursula Hinrichsen Verlag (Holzminden)	3922293077
128.	Atlas zur Eisenbahn-Geschichte: Deutschland, Österreich, Schweiz	Gerlach H. H.	1	1986		Orell Füssli Verlag (Zürich-Wiesbaden)	3280013909
129.	Eisenbahnatlas DDR	Kirsche H. J., Müller H.	2	1987	1988	VEB Tourist-Verlag (Berlin-Leipzig)	3350002935
130.	Bahn-Atlas (Bahn-Extra: 3/1992; 2/1993; 3/1996; 3/1998) / Bahn-Atlas Deutschland (Bahn-Extra: 2/2010; 3/2014)	Hahn C. et al.	6	1992	2014	GeraNova Zeitschriftenverlag / GeraMond Verlag (Munich)	9783862451968
131.	Bahn-Atlas Deutschland: Strecken, Reiseziele, Fahrzeuge		1	1993		Weltbild Verlag (Augsburg)	-
132.	Bahn-Atlas Schweiz: Die schönsten Alpenbahnen (Bahn-Extra: 3/1994)		1	1994		GeraNova Zeitschriftenverlag (Munich)	ISSN 09377174
133.	European Railway Atlas: Denmark, <u>Germany</u> , Austria, Switzerland	Ball M. G.	2	1993	1998	Ian Allan Publishing (Shepperton)	0711025509
134.	European Railway Atlas: Austria [Extract Atlas]		11	2007	2013	European Railway Atlas (Wrexham)	-
135.	...: Switzerland [Extract Atlas]		14	2007	2013		-
136.	...: Germany [Extract Atlas]		15	2008	2013		-
137.	...: Germany [Regional Series]		3	2014	2019		9781999787561
138.	...: Austria [Regional Series]		3	2014	2019		9781999787578
139.	...: Switzerland [Regional Series]		3	2014	2019		9781999787585
140.	Eisenbahnatlas Deutschland Eisenbahnatlas Deutschland 2008 digital [DVD]	Schweers H., Wall H. et al.	11	1994	2020		Schweers+Wall (Aachen / Cologne)
141.	Eisenbahnatlas Schweiz		1	2008		3894941413	
142.	Eisenbahnatlas Österreich		3	2004	2022 [to be publ.]	9783894941307 [2 <sup>nd</sup> Edition]	
143.	Historischer Eisenbahn-Atlas: Deutschland und angrenzende Länder 1925 (Eisenbahn Journal: Archiv 1/2000) / Taschenatlas für Eisenbahnreisende: Ein historischer Eisenbahn-Atlas aus dem Jahr 1925 [enlarged reprint]	Ambrosius E., Tänzler K.	3	2005	2021 [to be publ.]	VGB Verlagsgruppe Bahn (Fürstfeldbruck)	9783894941383 [2 <sup>nd</sup> Edition]
144.	Taschenatlas für Eisenbahnreisende. Reprint der Ausgabe aus dem Jahr 1927		2	2000	2013		9783896104069
			1	2005		GeraMond Verlag (Munich)	9783765473128

Tab. 5 (Part 4). Railway atlases of countries and regions in continental Europe excluding the post-Soviet area.

No.	Title / Alternative Title [Remarks]	Author / Authors / Editor / Editors	No. of Editions	Year of Publication		Publisher (Place of Publication)	ISBN of the Latest Edition
				1 <sup>st</sup> Ed.	Latest Ed.		
<b>Germany, Austria and Switzerland</b>							
145.	Grosser Atlas der Eisenbahnen von Mittel-Europa [1903/4] – 2 vols.: 1. Textband; 2. Tafelband	Flemming M., Merkel G.	1	2001		Archiv-Verlag (Braunschweig)	-
146.	Eisenbahn-Atlas: Übersichtliche Darstellung und Beschreibung sämtlicher Eisenbahnen Deutschlands u. Österreich-Ungarns [1880]	Herzfeld G.	1	2001		Ritzau KG (Pürgen)	3935101031
147.	Bahn-Atlas: Reisetipps und aktuelles Bahngeschehen. Deutschland, Schweiz, Österreich (Bahn-Extra: 2/2001)	Beckmann D. et al.	1	2001		GeraNova Zeitschriftenverlag (Munich)	3897241536
148.	Eisenbahn-Taschenatlas: Deutschland, Österreich, Schweiz / Der neue Eisenbahn-Taschenatlas: ...	Kolev V., Nau A. et al.	5	2005	2015	GeraMond Verlag (Munich)	9783862452996
149.	Reise-Atlas für den Auto- und Eisenbahn-Verkehr von Deutschland, Österreich, Tschechoslowakei, Schweiz nebst Grenzgebieten [1934]	Opitz C.	1	2008			9783765472954
150.	Atlas der deutschen Eisenbahn-Geschichte	Schricker P., Knipping A.	1	2010			9783765470158
151.	Übersichtskarten Deutsche Reichsbahn 1948 - 1959 - 1969 - 1976 - 1990 [timetable maps in atlas form]	Deutsche Reichsbahn	1	2016		Verlag Rockstuhl (Bad Langensalza)	9783959661478
152.	Atlas DR-G 1926. Übersichtskarte der Eisenbahnen Deutschlands 1926 [sheet maps in atlas form]		1	2019			9783959664172
153.	Die Netzkarten und Bezirkskarten der Reichsbahn 1935		1	2019			9783959664196
154.	Besatzungszonen Übersichtskarten Deutsche Reichsbahn 1947-1948-1949 [timetable maps in atlas form]		1	2019			9783959664271
155.	Übersichtskarten Deutsche Reichsbahn 1983 - 1984 - 1985 - 1986 - 1987 - 1988 - 1989 - 1990 [timetable maps in atlas form]		1	2019			9783959664318
156.	Atlas DR 1962. Eisenbahnstreckenlexikon der Deutschen Reichsbahn / Eisenbahn-Verkehrskarte der Deutschen Demokratischen Republik [sheet map in atlas form]		1	2019			9783959664530
157.	Atlas DR. Schema des Eisenbahnnetzes der Sowjetischen Besatzungszone Deutschlands – Berlin im März 1946 [sheet map in atlas form]		1	2019			9783959664615
158.	Berlin 1933-1938: Übersichtskarte der Rbd Berlin 1933. Wanderkarte zum amtlichen Taschenfahrplan 1938 [sheet maps in atlas form]		1	2020			9783959665230
159.	Berlin 1940-1943: Übersichtskarte der Rbd Berlin 1940 und Sonderkarte zur. Übersichtskarte der Rbd Berlin 1943 [sheet maps in atlas form]		1	2021			9783959665834

Tab. 5 (Part 5). Railway atlases of countries and regions in continental Europe excluding the post-Soviet area.

No.	Title / Alternative Title [Translation / Remarks]	Author / Authors / Editor / Editors	No. of Editions	Year of Publication		Publisher (Place of Publication)	ISBN of the Latest Edition
				1 <sup>st</sup> Ed.	Latest Ed.		
<b>Germany, Austria and Switzerland</b>							
160.	Deutsches Reich. Eisenbahnstrecken Atlas Mitteleuropa 1912 / Winklers Eisenbahnstrecken- und Lademaß-Karte von Mitteleuropa 1912 [sheet map in atlas form]	Winkler E.	1	2017		Verlag Rockstuhl (Bad Langensalza)	9783959661805
161.	Eisenbahn und Verkehrs-Atlas des Deutschen Reiches [1902]	Opitz C., Koch W.	1	2017		Melchior Historischer Verlag (Wolfenbüttel)	9783945853665
162.	RailMap Europe: Alpine Special / Europe by RailPass: Alpine Routes	Ross C.	3	2017	2018	Solitaire Contracts (Manchester)	9781911165156
163.	Bahn-Atlas Berlin: Die Eisenbahn 1838 bis heute (Bahn-Extra: 3/2019)	Hanna-Daoud T., Wolf-Dietger M.	1	2019		GeraMond Verlag (Munich)	9783956131394
<b>Nordic countries (Denmark, Norway, Sweden, Finland)</b>							
164.	European Railway Atlas: <u>Scandinavia</u> and Eastern Europe	Ball M. G.	1	1993		Ian Allan Publishing (Shepperton)	0711021724
165.	...: <u>Denmark</u> , Germany, Austria, Switzerland		2	1993	1998		0711025509
166.	European Railway Atlas: Nordic Region [Extract Atlas]		13	2007	2013	European Railway Atlas (Wrexham)	-
167.	...: Nordic Region [Regional Series]		3	2013	2019/20		9781999787530
<b>Central and Eastern Europe (Poland, Czechia, Slovakia, Hungary)</b>							
168.	Atlas odległości taryfowych dla przewozu osób oraz przesyłek bagażowych i ekspresowych [Atlas of tariff distances for the transport of passengers, luggage and express shipments]	Editorial team	2	1953	1961/ 1988 [update]	Wydawnictwa Komunikacyjne / Wydawnictwo Ministerstwa Komunikacji (Warsaw)	-
169.	European Railway Atlas: <u>Scandinavia</u> and <u>Eastern Europe</u>	Ball M. G.	1	1993		Ian Allan Publishing (Shepperton)	0711021724
170.	European Railway Atlas: Hungary [Extract Atlas]		14	2007	2013	European Railway Atlas (Wrexham)	-
171.	...: Poland [Extract Atlas]		14	2008	2013		-
172.	...: Slovakia & Czech Republic [Extract Atlas]		13	2008	2013		-
173.	...: Poland / ...: <u>Poland</u> and Kaliningrad [Regional Series]		3	2014	2019/20		9781916121218
174.	...: Czech Republic & Slovakia [Regional Series]		3	2015	2019/20		9781916121201
175.	...: Hungary [Regional Series]		3	2015	2019		9781999787592
176.	Grosser Atlas der Eisenbahnen von Mittel-Europa [1903/4] – 2 vols.: 1. Textband; 2. Tafelband	Flemming M., Merkel G.	1	2001		Archiv-Verlag (Braunschweig)	-
177.	Atlas drah České republiky [Atlas of railway lines of the Czech Republic]	Hudec Z. et al.	2	2004	2006	Dopravní vydavatelství MALKUS (Praha)	8087047001
178.	Reise-Atlas für den Auto- und Eisenbahn-Verkehr von Deutschland, Österreich, <u>Tschechoslowakei</u> , Schweiz nebst Grenzgebieten [1934]	Opitz C.	1	2008		GeraMond Verlag (Munich)	9783765472954
179.	Atlas Linii Kolejowych Polski [Atlas of railway lines of Poland]	Stankiewicz R., Stiasny M.	3	2010	2014	Eurosprinter (Rybnik)	9788363652128
180.	Mały Atlas Linii Kolejowych Polski [Small atlas of railway lines of Poland]		2	2011	2022 [to be publ.]		9788393100637 [1 <sup>st</sup> Edition]

Tab. 5 (Part 6). Railway atlases of countries and regions in continental Europe excluding the post-Soviet area.

No.	Title / Alternative Title [Translation / Remarks]	Author / Authors / Editor / Editors	No. of Editions	Year of Publication		Publisher (Place of Publication)	ISBN of the Latest Edition		
				1 <sup>st</sup> Ed.	Latest Ed.				
<b>Central and Eastern Europe (Poland, Czechia, Slovakia, Hungary)</b>									
181.	Mały Atlas Linii Kolejowych Czech / Malý Atlas Draž Česka [Small atlas of railway lines of Czechia]	Waguła H., Fedorowicz S.	2	2018	2019	Atlas Kolejowy Polski, Czech i Słowacji (Kraków)	9788395039010		
182.	Mały Atlas Linii Kolejowych Słowacji / Malý Atlas Draž Slovenska [Small atlas of railway lines of Slovakia]		1	2019			9788395039027		
183.	Atlas kolei wąskotorowych [Atlas of narrow-gauge railways]	Korcz P., Pyssa R.	1	2019		Kolpress (Poznań)	9788394307523		
<b>Southern Europe (Portugal, Spain, Italy, the Balkans, Romania, Bulgaria, Turkey)</b>									
184.	Géographie universelle des transports. T. II: Géographie des chemins de fer d'Europe – 2 vols.: 1. Suisse-Italie; 2. Belgique, Hollande, Grand-Duché de Luxembourg, Espagne, Portugal	Lartilleux H.	1	1951-1953		Librairie Chaix (Paris)	-		
185.	Geografía de los ferrocarriles españoles. Traducida por el Servicio de Estudios del Consejo de Administración de la R.E.N.F.E. del 2º Volumen del tomo II de la Geografía universal de los Transportes		1	1954		Sucesores de Rivadeneyra (Madrid)	-		
186.			1	2010		Reserva Anticipada (Zaragoza)	9788495493330		
187.	Atlas der Eisenbahnen des Deutschen Reiches, Oesterreich-Ungarns, Belgiens, der Niederlande, Italiens und der Schweiz [1886]	Nietmann W.	1	1983		Horst-Werner Dumjahn Verlag (Mainz)	3921426278		
188.	Atlas der Eisenbahnen Deutschlands, Oesterreich-Ungarns, Belgiens, der Niederlande, Italiens und der Schweiz [1886]		1	2012		Melchior Historischer Verlag (Wolfenbüttel)	9783942562683		
189.	Eisenbahn-Atlas von Deutschland, Belgien, Elsass und dem nördlichsten Teile von Italien [1847]	Stülpnagel F. von, Bär J. Ch.	1	1985		Ursula Hinrichsen Verlag (Holzminden)	3922293077		
190.	Atlas de los ferrocarriles españoles	RENFE	1	1989		Plaza & Janés (Barcelona)	8401608937		
191.	European Railway Atlas: Spain, Portugal, Italy, Greece	Ball M. G.	1	1993		Ian Allan Publishing (Shepperton)	0711020876		
192.	European Railway Atlas: Italy [Extract Atlas]		16	2007	2013	European Railway Atlas (Wrexham)	-		
193.	...: Spain & Portugal [Extract Atlas]		16	2008	2013		-		
194.	...: South East Europe & Turkey [Extract Atlas]		14	2008	2013		-		
195.	...: Spain & Portugal [Regional Series]		3	2013	2019/20		9781999787554		
196.	...: Italy [Regional Series]		3	2014	2019/20		9781916121225		
197.	...: The Balkans [Regional Series]		3	2015	2019/20		9781916121256		
198.	...: Romania, Bulgaria and Moldova [Regional Series]		3	2015	2020		9781916121263		
199.	Eisenbahnatlas Italien und Slowenien / Atlante ferroviario di Italia e Slovenia		Schweers H. et al.	1	2010		Schweers+Wall (Cologne)	9783894941291	
200.	Eisenbahnatlas Griechenland		Wall H.	1	2018			9783894941482	
201.	Atlas: High Speed Rail in Spain	Mesa Santos L. E. et al.	1	2017			Fundación de los Ferrocarriles Españoles, Department of Geography and Rail Traffic (Madrid)	9788494747700	

Source: Own elaboration based on author's collection and data published in portals: WorldCat, AbeBooks, Booklooker, eBay, ZVAB.



Tab. 6 (Part 1). Railway atlases of countries and regions in the post-Soviet area.

No.	Title / Alternative Title [Transliteration / Translation / Remarks]	Author / Authors / Editor / Editors	No. of Editions	Year of Publication		Publisher (Place of Publication)	ISBN of the Latest Edition
				1 <sup>st</sup> Ed.	Latest Ed.		
<b>Former USSR</b>							
202.	Альбом схем железных дорог СССР [Al'bom skhem zheleznykh dorog SSSR / Album of diagrams of USSR railways]	Anatol'yev L. N. et al.	11	1936	1955	Transkartografiya NKPS / Transzheldorizdat NKPS / Soyuztransproyekt MPS / Glavtransproyekt MPS / Glavtransproyekt MTS (Moscow)	-
203.	Альбом схем кратчайших железнодорожных направлений с указанием расстояний [Al'bom skhem kratchayshikh zheleznodorozhnykh napravleniy s ukazaniyem rasstoyaniy / Album of diagrams of the shortest railway directions with distances]	Simanovskiy M. A.	2	1949	1958	Transzheldorizdat MPS (Moscow)	-
		Smetanin A. I.	1	1971		Transport MPS (Moscow)	-
204.	Атлас схем железных дорог СССР [Atlas skhem zheleznykh dorog SSSR / Atlas of diagrams of USSR railways]	Anatol'yev L. N.	1	1962		Glavtransproyekt MTS (Moscow)	-
205.	Атлас железных дорог СССР [Atlas zheleznykh dorog SSSR / Atlas of USSR railways]		2	1968	1975	Glavtransproyekt MPS / Transport MPS (Moscow)	-
206.	Атлас схем железных дорог СССР [Atlas skhem zheleznykh dorog SSSR / Atlas of diagrams of USSR railways; pocket atlas]	Baudina S. B.	5	1960	1964	Glavnoye upravleniye geodezii i kartografii pri Sovete Ministrov SSSR (Moscow)	-
207.	Железные дороги СССР. Направления и станции [Zheleznyye dorogi SSSR. Napravleniya i stantsii / USSR railways. Directions and stations; pocket atlas]	Beloglazova O. A.	6	1965	1971		-
208.	Атлас схем железных дорог СССР [Atlas skhem zheleznykh dorog SSSR / Atlas of diagrams of USSR railways; pocket atlas]	Beloglazova O. A. et al.	12	1972	1983		-
209.	Атлас железных дорог СССР. Пассажирское сообщение [Atlas zheleznykh dorog SSSR. Passazhirskoye soobshcheniye / Atlas of USSR Railways. Passenger service]	Mikhaylenko V. Ya.	7	1982	1990		-
210.	Атлас железных дорог СССР [Atlas zheleznykh dorog SSSR / Atlas of USSR railways]	Lagutina N. P.	1	1990			-
<b>Russia and other post-Soviet countries (Commonwealth of Independent States, Baltic states, Georgia, Turkmenistan and Ukraine)</b>							
211.	Атлас железных дорог Российской Федерации, Азербайджана, Армении, Беларуси, Грузии, Казахстана, Кыргызстана, Латвии, Литвы, Молдовы, Таджикистана, Туркменистана, Узбекистана, Украины, Эстонии [Atlas zheleznykh dorog Rossiyskoy Federatsii, ... / Atlas of railways of Russian Federation, Azerbaijan, Armenia, Belarus, Georgia, Kazakhstan, Kyrgyzstan, Latvia, Lithuania, Moldova, Tajikistan, Turkmenistan, Uzbekistan, Ukraine, Estonia]	Potemkin N. N.	1	1993		Federalnaya sluzhba geodezii i kartografii Rossii / Roskartografiya (Omsk)	5851200111

Tab. 6 (Part 2). Railway atlases of countries and regions in the post-Soviet area.

No.	Title / Alternative Title [Transliteration / Translation / Remarks]	Author / Authors / Editor / Editors	No. of Editions	Year of Publication		Publisher (Place of Publication)	ISBN of the Latest Edition
				1 <sup>st</sup> Ed.	Latest Ed.		
<b>Russia and other post-Soviet countries (Commonwealth of Independent States, Baltic states, Georgia, Turkmenistan and Ukraine)</b>							
212.	Ukraine, Belarus, Moldova Railway Atlas	Yonge J., Tarkhov S.	1	1995		Quail Map Company (Exeter)	1898319103
213.	Атлас схем железных дорог государств-участников СНГ, Латвии, Литвы, Эстонии [Atlas skhem zheleznykh dorog gosudarstv-uchastnikov SNG, Latvii, Litvy, Estonii / Atlas of diagrams of railways of the CIS member states, Latvia, Lithuania, Estonia] / ... Грузии, Латвии, Литвы, Эстонии [...Gruzii, Latvii, Litvy, Estonii / ... Georgia, Latvia, Lithuania, Estonia]	Lagutina N. P.	3	1999	2019	Roskartografiya / FGUP "Omskaya kartograficheskaya fabrika" (Omsk)	9785952301139
214.	Атлас. Железные дороги. Россия. Страны СНГ. Прибалтика [Atlas. Zheleznyye dorogi. Rossiya. Strany SNG. Pribaltika / Atlas. Railways. Russia. CIS countries. Baltic states]		1	2002			5851201274
215.	Атлас. Железные дороги. Россия и сопредельные государства [Atlas. Zheleznyye dorogi. Rossiya i sopredel'nyye gosudarstva / Atlas. Railways. Russia and neighbouring countries]		1	2010 / 2012 [reprint]			9785952303133
216.	World Rail Atlas and Historical Summary – Volume 8: The Middle East and <u>Caucasus</u>	Robinson N.	1	2006		World Rail Atlas (Darfield, Barnsley)	9789541201282
217.	European Railway Atlas: Baltic States, Belarus & Ukraine. Including Kaliningrad [Extract Atlas]	Ball M. G.	14	2007	2013	European Railway Atlas (Wrexham)	-
218.	European Railway Atlas: The Baltic States, Belarus and Ukraine [Regional Series]		3	2015	2020		9781916121270
219.	...: Romania, Bulgaria and <u>Moldova</u> [Regional Series]		3	2015	2020		9781916121263
220.	...: Poland and <u>Kaliningrad</u> [Regional Series]		2	2016	2019/20		9781916121218
221.	Україна. Атлас залізниць [Ukrayina. Atlas zaliznyts' / Ukraine. Atlas of railways]	Kopylova I. V., Khil'chevs'ka O. V.	1	2008		DNVP "Kartohrafiya" (Kyiv)	9789664750827
222.	Atlas Linii Kolejowych Polski [Atlas of railway lines of Poland; editions including Kaliningrad Oblast and Klaipėda area]	Stankiewicz R., Stiasny M.	2	2011	2014	Eurosprinter (Rybnik)	9788363652128
223.	Атлас железных дорог России [Atlas zheleznykh dorog Rossii / Atlas of Russian railways]	Yakunin V. I., Pekhterev F. S. et al.	1	2015		Institut ekonomiki i razvitiya transporta / Feoriya (Moscow)	9785917960579
224.	Trans-Siberian Railroad Atlas	Ujimiya Y., et al.	1	2016		ITMB Publishing (Richmond, BC)	9781771297912

Source: Own elaboration based on author's collection and data published in portals: WorldCat, General Digital Catalogue of Russian State Library.

Abbreviations:

NKPS – Народный комиссариат путей сообщения СССР [Narodnyy komissariat putey soobshcheniya SSSR / People's Commissariat for Railways of the USSR]

MPS – Министерство путей сообщения СССР [Ministerstvo putey soobshcheniya SSSR / Ministry of Railways of the USSR]

MTS – Министерство транспортного строительства СССР [Ministerstvo Transportnogo Stroitel'stva SSSR / Ministry of Transport Construction of the USSR]

Tab. 7 (Part 1). Railway atlases of countries and regions in Africa, Asia, and Australasia.

No.	Title / Alternative Title [Romanisation / Translation / Remarks]	Author / Authors / Editor / Editors	No. of Editions	Year of Publication		Publisher (Place of Publication)	ISBN of the Latest Edition
				1 <sup>st</sup> Ed.	Latest Ed.		
<b>Africa and the Middle East</b>							
225.	Géographie universelle des transports. T. I: Géographie des chemins de fer français – 2 vols.: 3. Afrique du Nord; 4. France lointaine [French West Africa, French Equatorial Africa]	Lartilleux H.	1	1949-1950		Librairie Chaix (Paris)	-
226.	Streckenatlas der deutschen Eisenbahnen 1893-1935 [German East Africa, German South-West Africa, Togo, Cameroon]	Kobschätzky H.	1	1975		Alba Buchverlag (Düsseldorf)	387094028X
227.	Réseaux Ferrés de L'ouest Africain / Railway Networks in West Africa. T. 1 [Ghana, Togo, Benin, Nigeria, Cameroon, Gabon, S. Tome P.]	Honig E. T.	1	1988		Röhr-Verlag (Krefeld)	9783884901724
228.	World Rail Atlas and Historical Summary – 2 vols.: 7. North, East and Central Africa; 8. <u>The Middle East</u> and Caucasus	Robinson N.	1	2006-2009		World Rail Atlas (Darfield, Barnsley)	9789541201282 9789549218435
<b>India</b>							
229.	India Railway Atlas / भारत रेलवे एटलस [Bhaarat Relave Etalas]	Arya R. P., et al.	11	2000	2014	Indian Map Service (Jodhpur)	9788187460152
230.	The Great Indian Railway Atlas	Roychoudhury S.	3	2005	2015	Samit Roychoudhury (Kolkata)	9788190145732
<b>China, Hong Kong, Korea, Mongolia, Taiwan</b>							
231.	China Railway Atlas. Hong Kong. Korea. Taiwan / China Railway Atlas. Mongolia. Taiwan	Yonge J.	3	1993	2008	Quail Map Company (Exeter)	9781898319825
232.	中国铁路交通地图集 [Zhongguo Tielu Jiao Tong Dituji / Railway Transport Atlas of China]	Chu S. M.	1	1995		China Railway Publishing House (Beijing)	7113018106
233.	中华人民共和国铁路地图集 [Zhonghua Renmin Gongheguo Tielu Dituji / Railway Atlas of People's Republic of China]	Editorial team	3	2004	2008		-
234.	中国铁路地图集 [Zhongguo Tielu Dituji / China Railway Atlas]		3	2005	2015		9787113138400
235.	中国铁路与城市交通地图册 [Zhongguo Tielu Yu Chengshi Jiaotong Dituji / China Railway and Urban Transportation Atlas]	Editorial team	3	1996	2000	Guangdong Map Publishing House (Guangzhou)	7805222932
236.	中国铁路地图册 [Zhongguo Tielu Dituji / China Railway Atlas]	Editorial team	4	2011	2015	The Chinese Cartographic Society Press (Shanghai)	9787800316135
237.	日本鉄道旅行地図帳 – 朝鮮・台湾 [Nippon Tetsudo Ryoko Chizu Cho / Railway Travel Atlas of Japan – <u>Korea, Taiwan</u> ]	Imao K.	1	2009		Shinchosha Publishing (Tokyo)	9784107900326
238.	… 満州・樺太 [... – <u>Manchuria</u> , Sakhalin]		1				9784107900333
<b>Japan</b>							
239.	Japan Railway Atlas	Yonge J.	1	1975		Quail Map Company (Exeter)	0900609168
240.	日本鉄道旅行地図帳 [Nippon Tetsudo Ryoko Chizu Cho / Railway Travel Atlas of Japan] – 12 vols.: Hokkaido; Tohoku; Kanto 1; Kanto 2; Tokyo; Tohoku-Shinetsu; Tokai; Kansai 1; Kansai 2; Osaka; Chugoku-Shikoku; Kyushu-Okinawa	Imao K.	1	2008-2009		Shinchosha Publishing (Tokyo)	9784107900197 ... 978410790030
241.	… 東日本大震災の記録 [... Higashinippon Daishinsai No Kiroku / ... Records of the Great East Japan Earthquake]		1	2011			9784107900470

Tab. 7 (Part 2). Railway atlases of countries and regions in Africa, Asia, and Australasia.

No.	Title / Alternative Title [Romanisation / Translation / Remarks]	Author / Authors / Editor / Editors	No. of Editions	Year of Publication		Publisher (Place of Publication)	ISBN of the Latest Edition
				1 <sup>st</sup> Ed.	Latest Ed.		
<b>Japan</b>							
242.	日本鉄道旅行歴史地図帳 [Nippon Tetsudo Ryoko Rekishi Chizu Cho / Historical Railway Travel Atlas of Japan] – 12 vols.: Hokkaido; Tohoku; Kanto; Tokyo; Tokyo Private Railway; Tohoku-Shinetsu; Tokai; Kinki; Osaka; Kansai Private Railway; Chugoku-Shikoku; Kyushu-Okinawa	Imao K.	1	2010-2011		Shinchosha Publishing (Tokyo)	9784107900357 ... 9784107900463
243.	JR 東日本全線【決定版】鉄道地図帳 [JR Higashinippon Zensen (Ketteihan) Tetsudo Chizu Cho / JR East All Lines (Definitive Edition) Railway Atlas] – 12 vols.: Tokyo; Joetsu-Nagano; Yokohama; Mito-Chiba; Sendai; Omiya; Takasaki-Nagano; Hachioji; Niigata; Akita; Morioka; Tohoku-Yamagata-Akita		1	2009-2010		Gakken (Tokyo)	9784056057621 ... 9784056057737
244.	全日本鉄道旅行地図帳 [Zennihon Tetsudo Ryoko Chizu Cho / All Japan Railway Travel Atlas]	Shogakukan Creative	13	2009	2021	Shogakukan Creative (Tokyo)	9784778050177
245.	全国鉄道絶景パノラマ地図帳 [Zenkoku Tetsudo Zekkei Panorama Chizu Cho / National Railway Panoramic Atlas]	Weekly Scenic Railway Journey	1	2010		Shueisha (Tokyo)	9784087805840
246.	Railway mapple 鉄道地図帳 [Tetsudo Chizu Cho / Railway Atlas] – 7 vols.: Hokkaido; Tohoku; Kanto; Chubu; Kansai; Chugoku-Shikoku; Kyushu	Umehara J.	1	2010		Shobunsha Publications (Tokyo)	9784398653017 ... 9784398653079
247.	全国鉄道地図帳 Railway mapple [Zenkoku Tetsudo Chizu Cho / National Railway Atlas]	Shobunsha Editorial Department	1	2020			9784398653116
248.	東海道新幹線の車窓を 100 倍楽しむ地図帳 [Tokaidoshinkansen No Shaso Wo 100 Bai Tanoshimu Chizu Cho / Atlas to enjoy the Tokaido Shinkansen train window 100 times]	Shinkansen Window Study Group	1	2018		Makino Publishing (Tokyo)	9784837665038
249.	JTB の鉄道旅地図帳 [JTB No Tetsudo Tabi Chizu Cho / JTB's Railway Travel Atlas]	JTB Publishing	2	2018	2020	JTB Publishing (Tokyo)	9784533141782
250.	JTB の鉄道旅地図ノート [JTB No Tetsudo Tabi Chizu Note / JTB's Railway Travel Atlas Notebook]		1	2019			9784533134562
<b>Southeast Asia, Australia and New Zealand</b>							
251.	Géographie universelle des transports. T. I: Géographie des chemins de fer français – 4. France lointaine [French Indochina]	Lartilleux H.	1	1950		Librairie Chaix (Paris)	-
252.	New Zealand railway and tramway atlas	Yonge J.	4	1975	1993	Quail Map Company (Exeter)	0900609923
253.	Railway track diagrams – 7. New South Wales Metropolitan Areas		1	1998			1898319340
254.	Australian railway atlas. No. 1 – Tasmania		Yonge J., Stokes J.	1	2004		1898319693
255.	Australian Railway Routes 1854-2000	Quinlan H., Newland J. R.	1	2001		Australian Railway Historical Society (Redfern)	0909650497
256.	The Railway Atlas of Thailand, Laos and Cambodia	Whyte B. R.	1	2010		White Lotus (Bangkok)	9789744801579

Source: Own elaboration based on author's collection and data published in portals: WorldCat, Books Kinokuniya, CDJapan, Confucius Books.



Tab. 8. Railway atlases of countries and regions in North America.

No.	Title / Alternative Title	Author / Authors / Editor / Editors	No. of Editions	Year of Publication		Publisher (Place of Publication)	ISBN of the Latest Edition
				1 <sup>st</sup> Ed.	Latest Ed.		
257.	Handy Railroad Maps of the United States / Handy Railroad Atlas of the United States	Editorial team	21	1928	1988	Rand McNally & Company (Chicago-New York-San Francisco)	0528210017
258.	Rails to the North Star / Rails to the North Star: a Minnesota Railroad Atlas	Prosser R. S.	2	1966	2007	Dillon Press / University of Minnesota Press (Minneapolis)	9780816652679
259.	Railroad Maps: highways, cities, stations, signals, tonnage – 5 vols.: West; Prairie; Midwest; East; South	Editorial team	1	1980		Mac Publishing (Colorado Springs)	0936206012 ... 0936206055
260.	1928 Handy Railroad Atlas of the United States	Editorial team	1	1981?		Kalambach Publishing Co. (Milwaukee / Waukesha)	0890245320
261.	1948 Handy Railroad Atlas of the United States		1	1991?			0890240892
262.	Railroad Maps of North America: The First Hundred Years	Modelski A. M.	2	1984	1987	Library of Congress (Washington ) / Bonanza Books (New York)	0517642972
263.	Atlas: Canadian railways / Canadian rail atlas / Atlas: Chemins de fer canadiens / Atlas du rail canadien	Cartographie Hatra	5	1991	2012	Railway Association of Canada (Ottawa)	9780980946468
264.	SPV's Comprehensive Railroad Atlas of North America – 20 vols.: Northeast; California & Nevada; Arizona & New Mexico; Colorado & Utah; Great Lakes West; Great Lakes East; Appalachia and Piedmont; Pacific Northwest including Alaska & Hawaii; Southeast; New England & Maritime Canada; Mountain Plains; Texas; Southern States; Prairies West; Prairies East and Ozarks; Dakotas & Minnesota; Western Canada; Ontario; Quebec & Labrador + Newfoundland; Manitoba & Sask.	Walker M.	1 [v. 8, 11-20] / 2 [v. 2-7, 9-10] / 3 [v. 1]	1993-2011	1998-2011	Steam Powered Publishing (Dunkirk, Faversham) / SPV (Upper Harbledown, Canterbury)	187474503X ... 1874745226
265.	Mike Walker's North American Railroad Atlas – 4 vols.: Northeast; Appalachia & Piedmont; California & Nevada; Pacific Northwest		1	2020		RailfanDepot (Indianapolis)	-
266.	U.S. Railroad Traffic Atlas	Ladd H.	7	1995	2003	Ladd Publications (Orange) / RailfanDepot (Indianapolis)	-
267.	Lines of Country: An Atlas of Railway and Waterway History in Canada	Andreae Ch. A. et al.	1	1997		Boston Mills Press (Erin, Ontario)	1550461338
268.	The Routledge Historical Atlas of the American Railroads	Stover J. F.	1	1999		Routledge (New York-London)	9780415921404
269.	A Railroad Atlas of the United States in 1946 – 5 vols.: 1. The Mid-Atlantic States; 2. New York & New England; 3. Indiana, Lower Michigan & Ohio; 4. Illinois, Wisconsin & Upper Michigan; 5. Iowa & Minnesota	Carpenter R. C.	1	2003-2013		Johns Hopkins University Press (Baltimore)	9780801873317 ... 9781421410357
270.	Atlas of North American Railroads	Yenne B.	1	2005		MBI Publishing (Saint Paul)	9780760322994
271.	The Historical Atlas of North American Railroads	Wood I., Westwood J.	2	2008	2011	Chartwell Books (New York)	9780785827818
272.	Historical Atlas of the North American Railroad	Hayes D.	1	2010		Douglas & McIntyre (Vancouver)	9781553655534
						Univ. of California Press (Berkeley-Los Angeles-London)	9780520266162
273.	Railroad Atlas: New York's Capital Region	Starr T.	1	2021		Timothy Starr (Glenville, New York)	-

Source: Own elaboration based on author's collection and data published in portals: WorldCat, AbeBooks, eBay.

#### 4. Final remarks

In the age of mobile devices equipped with GPS receivers and navigation apps, traditional cartographic products for general use are gradually losing their importance in everyday life. This trend is not so evident in the case of railway atlases. Despite a growing share of electronic publications in the bookselling market, printed atlases are still being published. In fact, not many titles are available in e-book form, and they usually offer parallel hard copies. Today's atlas readers, however, do not seem to be typical passengers. They are not those who simply wish to find the best way to get from A to B. The target users are primarily enthusiasts and tourists interested in the course of the route itself, its history, geography, and locations passed on the way. Many of the elaborations continue to be used by professionals, although there appears to be some evidence that the role of printed publications will decline in that area. Following the development of geoinformatics, railway companies implement management systems based on GIS solutions. More and more public web portals offering interactive railway maps are also being created. Their functionalities, such as real-time tracking of train positions, go beyond those of a conventional map, providing for their major advantage. On the other hand, regular updating of spatial databases makes it impossible for third parties to carry out historical analyses. Therefore, railway atlases will certainly remain in use by researchers, and will be highly valued among hobbyists, regardless of the prevalence of new digital products.

The bibliography published here is a starting point for further research in the field of railway cartography. The issues that are not sufficiently discussed due to the limited volume of this paper include the informative value of atlases, and methods of presentation used in railway maps. The vast diversity of cartographic products in terms of their spatial and temporal scope as well as themes and purposes points to the need for the elaboration of a study illustrated with selected map excerpts. Expanding the bibliography to earlier decades of the 20<sup>th</sup> century and the entire 19<sup>th</sup> century is also a task worth undertaking.

The author hopes that the bibliography of railway atlases in its present version proves to be a useful tool facilitating research on transport geography, history, economics, or civil engineering, and becomes of interest to both practitioners and hobbyists. Aware of possible omissions and errors, the author would be grateful for any suggestions and corrections sent to the e-mail address provided on the front page.

#### Acknowledgements

The author would like to thank the following people and institutions for their help in obtaining the source materials:

Mike Ball (European Railway Atlas, Wrexham, United Kingdom); Nicolás Berardi (Latin American Railway Association ALAF, Buenos Aires, Argentina); Szymon Klemba (The Railway Research Institute IK, Warsaw, Poland); Roman Martyshkin (Institute of Economics and Transport Development IERT, Moscow, Russia); Michał Okonek (Łódź, Poland); Magdalena Sowińska (The Museum Station, Warsaw, Poland); Central Library of Geography and Environmental Protection (Stanisław Leszczycki Institute of Geography and Spatial Organization, Polish Academy of Sciences, Warsaw, Poland); Library of the Faculty of Earth Sciences and Spatial Management (Maria-Curie Skłodowska University, Lublin, Poland).

#### References

- Asociación Amigos del Ferrocarril Belgrano, 2021, *Red Ferroviaria Argentina. Estado de situación de la red física existente*, [https://www.sateliteferroviario.com.ar/horarios/mapa\\_argentina.htm](https://www.sateliteferroviario.com.ar/horarios/mapa_argentina.htm) [access: 11.06.2021].
- Atlas to accompany 2d report of the Railway Commissioners Ireland*, 1838, <https://digital.ucd.ie/view/ivrla:45724> [access: 7.04.2021].
- de Azevedo Isidoro I., Marat-Mendes T., Tângari V. R., 2017, The Portuguese railway in time and space – mapping phases of growth, stagnation, and decline (1845-2015), *Planning Perspectives*, 33(3), 363-384, DOI: 10.1080/02665433.2017.1348975.
- Baudina S. B. (ed.), 1960, *Atlas skhem zheleznykh dorog SSSR*, Glavnoye Upravleniye Geodezii i Kartografii MVD SSSR, Moscow.
- Beck H. C., 1933, *Map of London's Underground Railways*, <https://www.davidrumsey.com/luna/servlet/detail/RUMSEY~8~1~274012~90047744:Map-of-London-s-Underground-Railway> [access: 12.04.2021].
- Bibliography of the History of Inland Waterways, Railways & Road Transport in the British Isles, 1985-2019*, The Railway and Canal Historical Society, <https://rchs.org.uk/3255-2> [access: 9.04.2021].
- Brauer P. F., 2010, Records Relating to Railroads in the Cartographic Section of the National Archives, *Reference Information Paper*, 116, National Archives and Records Administration, Washington, DC.
- Brunner K., Günzel B., 1988, Eisenbahnstreckenarten und ihre Darstellungsmethoden, *Kartographische Nachrichten*, 38(1), 17-22.

- Button K., 2017, High-Speed Railways: Do They Produce Economic Growth?, *Mercatus Research*, Mercatus Center at George Mason University, Arlington.
- Challis D. M., Rush A., 2009, The Railways of Britain: An Unstudied Map Corpus, *Imago Mundi*, 61(2), 186-214, DOI: 10.1080/03085690902923614.
- Chai S., Liang Q., Zhong S., 2019, Design of Urban Rail Transit Network Constrained by Urban Road Network, Trips and Land-Use Characteristics, *Sustainability*, 11(21), 6128, DOI: 10.3390/su11216128.
- Colonel Michael H. Cobb PhD, 2019, <http://www.railwaysofgreatbritain.com/the-author> [archived version 24.12.2019: <https://web.archive.org/web/20191224145216/http://www.railwaysofgreatbritain.com/the-author>].
- Cooke R. A., 2019, *Track Layout Diagrams of the Great Western Railway and B.R. (W.R.). Section 10. West Cornwall*, Lightmoor Press, Lydney.
- Cram's Standard American Railway System Atlas of the World. Accompanied with a Complete and Simple index of the United States, 1901, George F. Cram, Chicago-New York, <https://purl.stanford.edu/pv759rs6726> [access: 8.04.2021].
- Dominas P., Przerwa T., 2017, *Od kolei na Dolnym Śląsku po Koleje Dolnośląskie*, Księży Młyn, Łódź.
- Dwornik A., 2018, Dystrybucja metadanych bibliograficznych na świecie – źródła, sposoby pozyskiwania, problemy (wybrane aspekty praktyczne), *Biuletyn EBIB*, 2(179)/2018.
- Field K., Cartwright AM W., 2014, Becksploitation: The Overuse of a Cartographic Icon, *The Cartographic Journal*, 51(4), 343-359, DOI: 10.1179/0008704114Z.000000000150.
- Hendschel U., 1844, *Eisenbahn-Atlas von Deutschland, Belgien und dem Elsass: mit allen Fahrplänen, Tarifen, Betriebs-Verordnungen und sonst dahin gehörigen Nachweisungen sowie den speciellen Karten der bedeutenderen bis jetzt vollendeten Eisenbahnen*, Carl Jugel, Frankfurt am Main, <http://dx.doi.org/10.3931/e-rara-49837> [access: 29.05.2021].
- Holland J., Spaven D., 2013, *Mapping the Railways*, Harper Collins, Glasgow.
- Horodyski B., 1979, Funkcjonalna analiza atlasów geograficznych jako specyficznej formy przekazu kartograficznego, *Prace i Studia Geograficzne*, 1, 87-149.
- Jakubowski A., Komornicki T., Kowalczyk K., Miszczuk A., 2020, Poland as a hub of the Silk Road Economic Belt: is the narrative of opportunity supported by developments on the ground?, *Asia-Europe Journal*, 18, 367-396, DOI: 10.1007/s10308-020-00571-6.
- Kennedy G., 2006, A Railroad Atlas of the United States in 1946. Volume 2, *Cartographic Perspectives*, 55, 67-69 [review].
- Konopska B., 2013, The tightening of censorship rules in cartography in Poland 1944-1989, *Geoinformation Issues*, 5(1), 5-20.
- Kot M. A., 2014, K istorii izyskaniy i kartografirovaniya zheleznykh dorog v XIX v., *Geodeziya i Kartografiya*, 7/2014, 27-33.
- Kowalczyk K., Adamiak A., 2016, Atlasowe metody prezentacji infrastruktury kolejowej wybranych państw świata [in:] A. Czerny, B. Konopska (eds.), *XXXIX Ogólnopolska Konferencja Kartograficzna. Wizualizacja kartograficzna w nauce i praktyce. Streszczenia referatów i posterów. Zwierzytniec, 26-28 września 2016 r.*, Kartpol, Lublin, 22.
- Koźlak A., 2013, Kolej aglomeracyjna jako podstawa systemu komunikacyjnego obszarów metropolitalnych w Polsce, *Studia Ekonomiczne. Zeszyty Naukowe Uniwersytetu Ekonomicznego w Katowicach*, 143, 172-185.
- Lawrenz D., 2012, *Ein Nachruf: Hans Schweers, Eisenbahn Kurier*, <https://www.eisenbahn-kurier.de/startseite/1047-ein-nachruf-hans-schweers> [access: 04.06.2021].
- Modelski A. M., 1975, *Railroad Maps of the United States: A Selective Annotated Bibliography of Original 19th-century Maps in the Geography and Map Division of the Library of Congress*, Library of Congress, Washington.
- Marti-Henneberg J., 2013, European integration and national models for railway networks (1840-2010), *Journal of Transport Geography*, 26, 126-138, DOI: 10.1016/j.jtrangeo.2012.09.004.
- Musich J., 2006, Mapping a Transcontinental Nation: Nineteenth- and Early Twentieth-Century American Rail Travel Cartography [in:] J. R. Akerman (ed.), *Cartographies of Travel and Navigation*, The University of Chicago Press, Chicago-London, 97-150.
- Network Rail Media Centre, 2018, *One of the world's most historically important railway artefacts has been rediscovered by Network Rail after more than 50 years*, <https://www.networkrailmediacentre.co.uk/news/one-of-the-worlds-most-historically-important-railway-artefacts-has-been-rediscovered-by-network-rail-after-more-than-50-years> [access: 7.06.2021].
- Neuner B., 2002, *Bibliographie der österreichischen Eisenbahnliteratur: von den Anfängen bis 1918*, Drews, Vienna.
- Nueva versión del Atlas Ferroviario Latinoamericano de Alaf, 2010, *Vía Libre*, 03/12/2010, <https://www.vialibre-ffe.com/noticias.asp?not=6374> [access: 04.06.2021].
- Okonek M., 2010, Atlas linii kolejowych Polski 2010, *Eisenbahnatlas Deutschland – recenzja, Polski Przegląd Kartograficzny*, 42(4), 366-371.
- Ostrowski W., 1976, Zagadnienie starzenia się treści atlasów [in:] W. Migacz (ed.), *Problemy atlasów narodowych i regionalnych. Materiały Ogólnopolskich Konferencji Kartograficznych*, T. 3. Wrocław-Warsaw, 101-112.
- Ovenden M., 2015a, *Great Railway Maps of the World*, Penguin Books, London.
- Ovenden M., 2015b, *Transit Maps of the World*, Penguin Books, London.
- Paige G. A., 1999, Cataloging the Contemporary Printed Atlas, *Cataloging & Classification Quarterly*, 27(1-2), 147-164, DOI: 10.1300/J104v27n01\_07.
- Peukert A., 2019, The Notion of Space on Railway Maps of the Habsburg Monarchy / Austria-Hungary, *Hungarian Historical Review*, 8(1), 52-76.

- Ratajski L., 1989, *Metodyka kartografii społeczno-gospodarczej*, Państwowe Przedsiębiorstwo Wydawnictw Kartograficznych, Warszawa–Wrocław.
- Revista Ferroviária, 2017, *Mapa das Estradas de Ferro do Brasil*, <http://ri.rumolog.com/servicos-aos-investidores/mapa-das-ferrovias-do-brasil> [access: 08.06.2021].
- Ribeill G., 2017, Henri Lartilleux (1904-1989), l'œuvre connue et... moins connue d'un polytechnicien hors-série, *Historail*, 43, 18-39.
- Rosik P., Kowalczyk K., 2015, Rozwój infrastruktury drogowej i kolejowej a przesunięcie modalne w Polsce w latach 2000-2010, *Prace Geograficzne*, 248, Instytut Geografii i Przestrzennego Zagospodarowania PAN, Warszawa.
- Salishchev K. A., 2003, *Kartografia ogólna*, Wydawnictwo Naukowe PWN, Warszawa.
- Segal Z., 2016, Regionalism and Nationalism in the Railway Cartography of Mid-Nineteenth Century Germany, *Imago Mundi*, 68(1), 46-61, DOI: 10.1080/03085694.2016.1107374.
- Stanev K., Alvarez-Palau E. J., Martí-Henneberg J., 2017, Railway Development and the Economic and Political Integration of the Balkans, c. 1850-2000, *Europe-Asia Studies*, 69(10), 1601-1625.
- Stover J. F., 1999, *The Routledge Historical Atlas of the American Railroads*, Routledge, New York–London.
- Szczuryk vel Szczerba J., 2017, *Historyczny opis linii Łuków–Lublin wraz z przyległymi łącznicami, bocznkami i kolejami wąskotorowymi obejmujący okres do końca XX w.*, Jarosław Szczuryk vel Szczerba, Ciecierzyn.
- Taylor Z., 2006, Railway closures to passenger traffic in Poland and their social consequences, *Journal of Transport Geography*, 14(2), 135-151.
- Taylor Z., 2007, *Rozwój i regres sieci kolejowej w Polsce*, Monografie, 7, Instytut Geografii i Przestrzennego Zagospodarowania PAN, Warsaw.
- Tucholski Z., 2013, Szkice do historii polskiej geodezji i kartografii kolejowej [in:] J. Ostrowski, P. Wespiański (eds.), *Kamienie milowe w kartografii. Z dziejów kartografii*. Tom XVII, Instytut Historii Nauki PAN, Warsaw, 285-308.
- UIC, 2021, *Atlas. High-Speed Rail 2021*, International Union of Railways, Paris, <https://uic.org/IMG/pdf/uic-atlas-high-speed-2021.pdf> [access: 10.06.2021].
- UITP, 2018, *Report. Commuter railway landscape*, The International Association of Public Transport, Brussels.
- Ulka C., 1982, Atlas odległości taryfowych, *Eksploatacja Kolei*, 9/82, 238-242.
- Wang J., Jin F., Mo H., Wang F., 2009, Spatiotemporal evolution of China's railway network in the 20<sup>th</sup> century: An accessibility approach, *Transportation Research Part A*, 43(8), 765-778, DOI: 10.1016/j.tra.2009.07.003.
- Whyte B., 2005, Australian Railway Atlas: No.1 – Tasmania, *The Globe*, 57, 54-55 [review].
- Wolmar C., 2007, *Fire and Steam. How the Railways Transformed Britain*, Atlantic Books, London.
- Wood D., Fels J., Krygier J., 2010, What Time Has This Place? [in:] D. Wood, J. Fels, J. Krygier, *Rethinking the Power of Maps*, The Guilford Press, New York–London, 93-96.
- Żyszkowska W., Spallek W., Borowicz D., 2012, *Kartografia tematyczna*, Wydawnictwo Naukowe PWN, Warsaw.

## Websites

Access in the period May-June 2021:

- AbeBooks – <https://www.abebooks.com>, <https://www.abebooks.co.uk>, <https://www.abebooks.de>
- Atlas Kolejowy Polski, Czech, Słowacji i Podkarpackiej Rusi – <https://www.atlaskolejowy.net>
- Bibliographie: CH - Landkarten – <http://www.bahn-bus-ch.de/bahnen/biblio-l.html>
- Bibliographie: DB - Landkarten – <http://www.bahn-bus-ch.de/bahnen/db2/biblio-l.html>
- Booklooker – <https://www.booklooker.de>
- Books Kinokuniya – <https://www.kinokuniya.co.jp>
- CDJapan – <https://www.cdjapan.co.jp>
- Confucius Books – <https://www.kongfz.com>
- David Rumsey Historical Map Collection – <https://www.davidrumsey.com/view>
- Dumjahn's Bahn-Bibliographie online – [http://www.dumjahn.de/antiquariat\\_buecher.html](http://www.dumjahn.de/antiquariat_buecher.html)
- eBay – <https://www.ebay.com>, <https://www.ebay.co.uk>, <https://www.ebay.de>
- ETF Online Shop (UIC Railway Technical Publications) – <https://www.shop-etf.com>
- General Digital Catalogue of Russian State Library – <https://search.rsl.ru>, <http://aleph.rsl.ru>
- Mapster (Historical maps of Poland and Central Europe) – <http://igrek.amzp.pl>
- National Railway Museum Library Catalogue – <https://york-search.york.ac.uk/primo-explore/search?vid=NRM-NUI>
- Ogólnopolska Baza Kolejowa (Polish Railway Database) – <https://www.bazakolejowa.pl>
- Trackmaps – <https://www.trackmaps.co.uk>
- WorldCat – <https://www.worldcat.org>
- ZVAB – Zentrales Verzeichnis Antiquarischer Bücher – <https://www.zvab.com>